

BY-LAW NUMBER 2007/35

BY-LAW NO. 2007/35 is a by-law of the County of Wetaskiwin No. 10 in the Province of Alberta, to authorize the adoption of an Area Structure Plan for the purpose of providing a framework for subsequent subdivision and development of the area known as Hoflin's in N ½ of NE 09-46-02-W5M in accordance with Section 633 of the Municipal Government Act, Chapter M-26.1, Revised Statutes of Alberta 2000, and amendments thereto.

WHEREAS: at the requirements of County Council, as per Policy 6606, an Area Structure Plan has been prepared for N ½ of NE 09-46-02-W5M.

AND WHEREAS: the proposed Area Structure Plan has been widely circulated and discussed within the County pursuant to Section 230, 606(1), and 633(1) of the Municipal Government Act, 2000, Chapter M-26.1, and amendments thereto.

NOW THEREFORE: the County of Wetaskiwin No. 10, duly assembled, hereby enacts as follows:

- (a) The document attached to this By-law as "Appendix A", together with accompanying maps, is hereby adopted as the *"Hoflin's (N ½ of NE 09-46-02-W5M)"*.
2. This by-law comes into effect on the date of third reading.

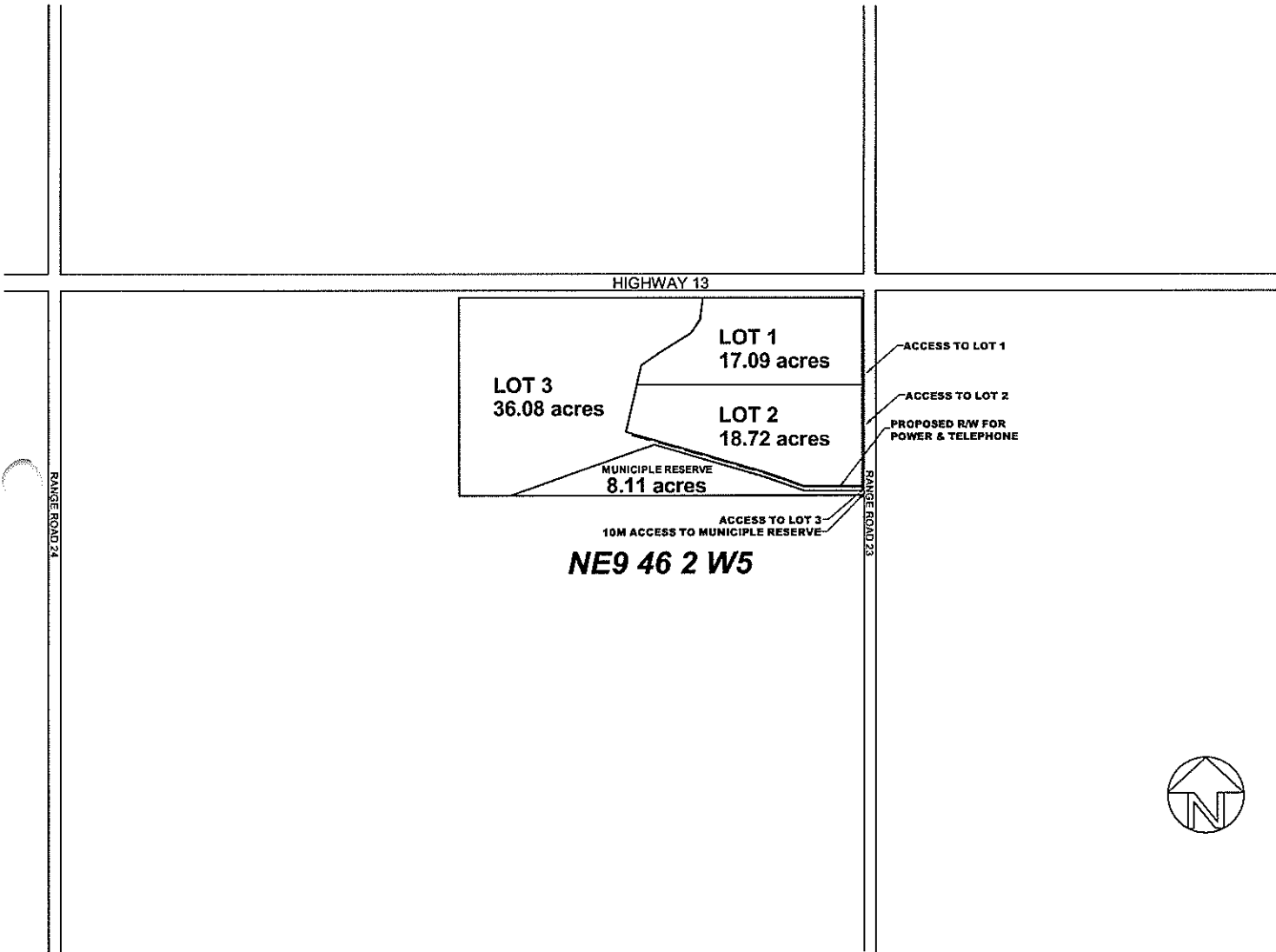
READ: A First time this 17th day of May, A.D., 2007.

READ: A Second time this 17th day of May, A.D., 2007.

READ: A Third time and finally passed this 17th day of May, A.D., 2007.


REEVE


SECRETARY-TREASURER





Scale 1:14000

0 250 500 750

Metres

FIGURE 2
Proposed Subdivision Plan