

TITLE:

SINGLE AND DOUBLE SERVICE LAYOUT

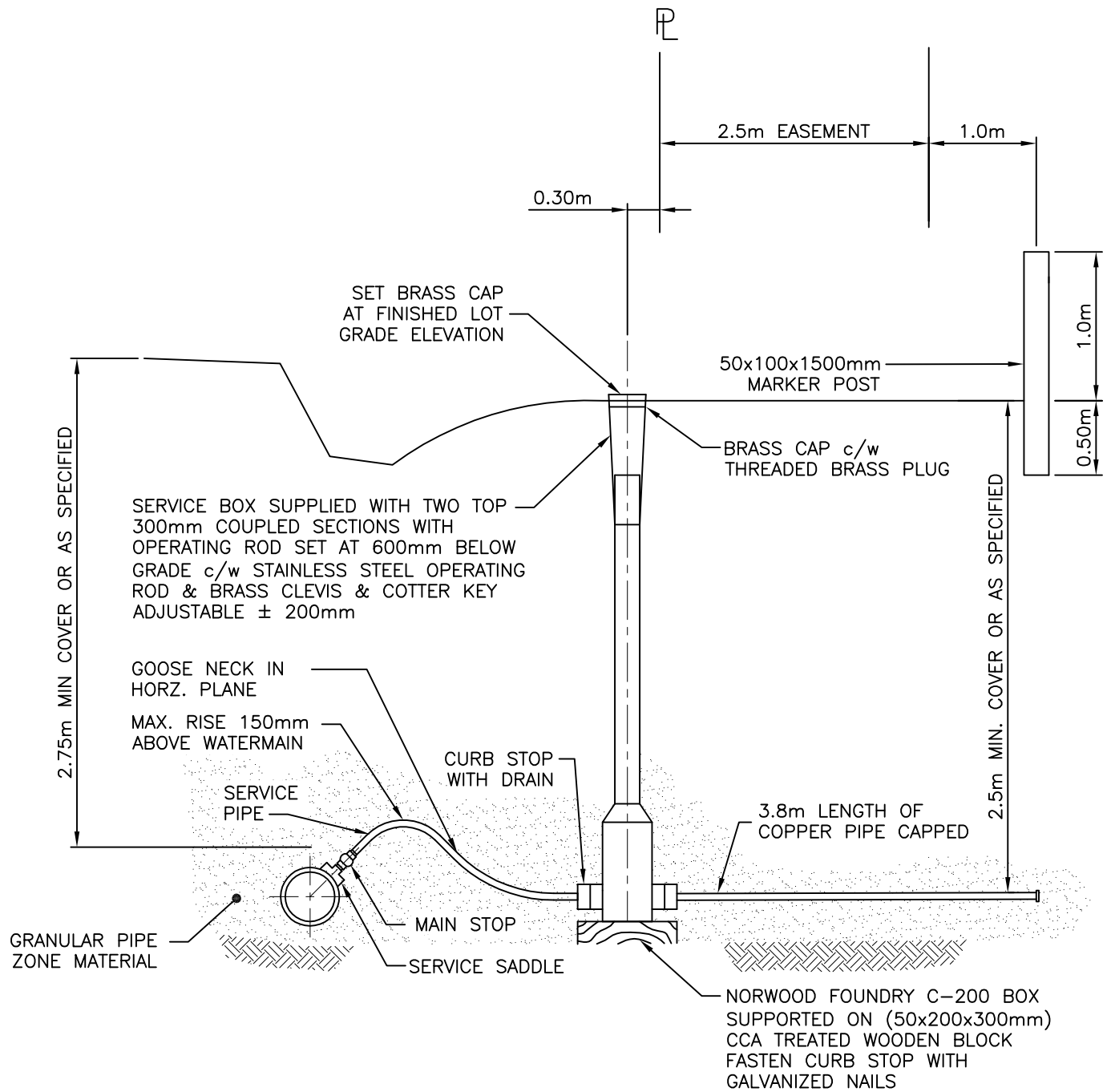
STANDARD DETAILS

SCALE: N.T.S.

DATE: SEPTEMBER 2010

STD. DWG NO.

8-100



TITLE:

TYPICAL WATER SERVICE CONNECTION

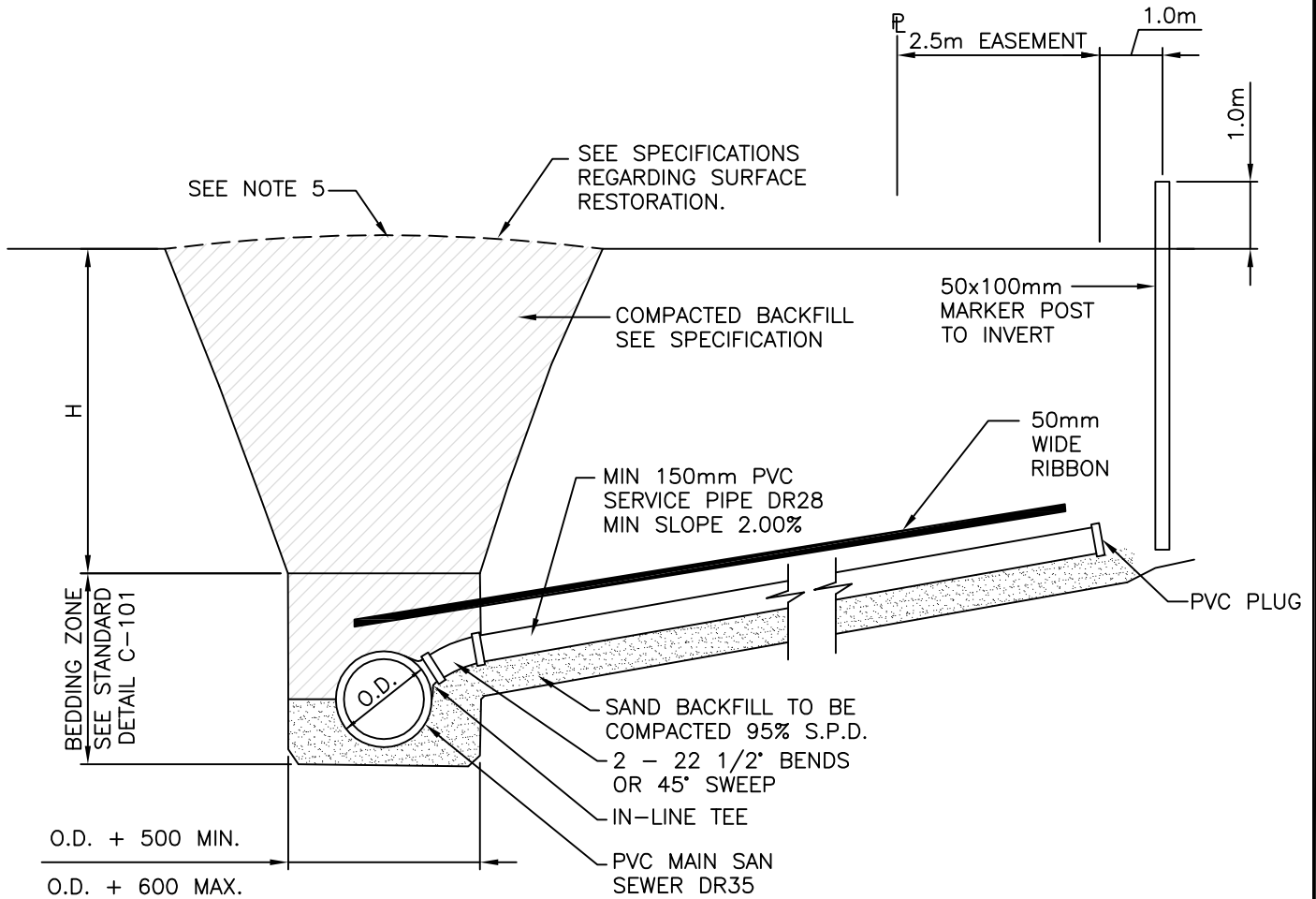
STANDARD DETAILS

SCALE: N.T.S.

DATE: SEPTEMBER 2010

STD. DWG NO.

8-101



NOTES:

1. WHEN CUT BACK SLOPES ARE TO BE USED IN LIEU OF CAGES AND SHORING, THESE SLOPES ARE TO MEET REQUIREMENTS OF LOCAL CODES.
2. SEE SPECIFICATIONS FOR MINIMUM COVER ABOVE PIPE.
3. MIN. PIPE ZONE WIDTH IS SPECIFIED TO ALLOW PROPER PIPE ZONE COMPACTION.
4. O.D. = OUTSIDE PIPE DIAMETER.
5. FOR UNCOMPACTIONED BACKFILL, CROWN TRENCH BY $0.1 \times H$.



TITLE:

TYPICAL SANITARY SERVICE CONNECTION

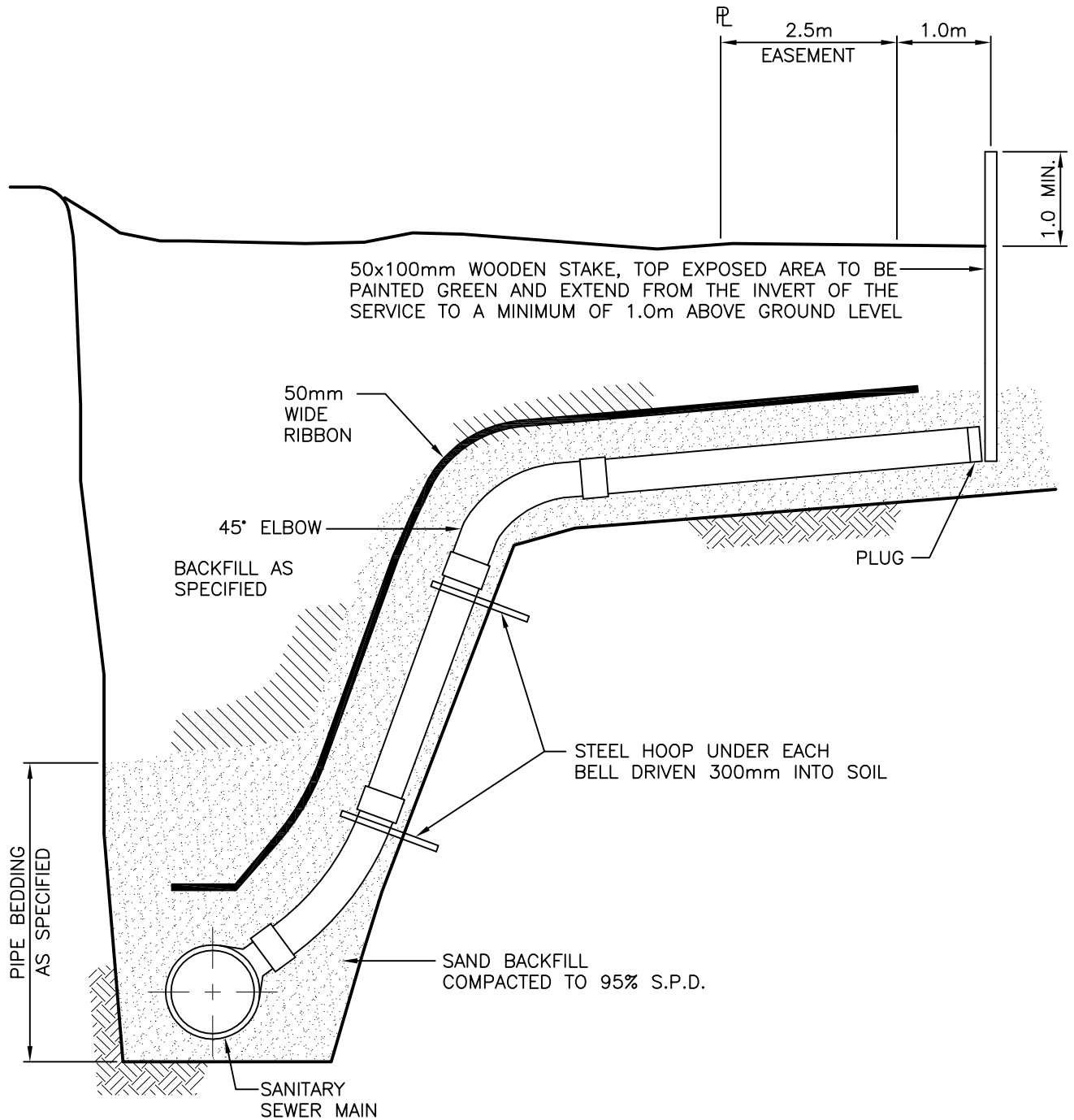
STANDARD DETAILS

SCALE: N.T.S.

DATE: SEPTEMBER 2010

STD. DWG NO.

8-102



NOTES:

1. WHEN CUT BACK SLOPES ARE TO BE USED IN LIEU OF CAGES AND SHORING. THESE SLOPES ARE TO MEET REQUIREMENTS OF LOCAL CODES.
2. MINIMUM COVER ABOVE PIPE 2.5m.
3. MINIMUM PIPE WIDTH IS SPECIFIED TO ALLOW PROPER PIPE ZONE COMPACTION.
4. FOR UNCOMPACTED BACKFILL, CROWN TRENCH BY H X 0.1
5. RIBBON SHOULD BE PLACED ABOVE BURIED PIPE AS PER DETAIL C-101.



TITLE:

TYPICAL STANDARD RISER DETAIL

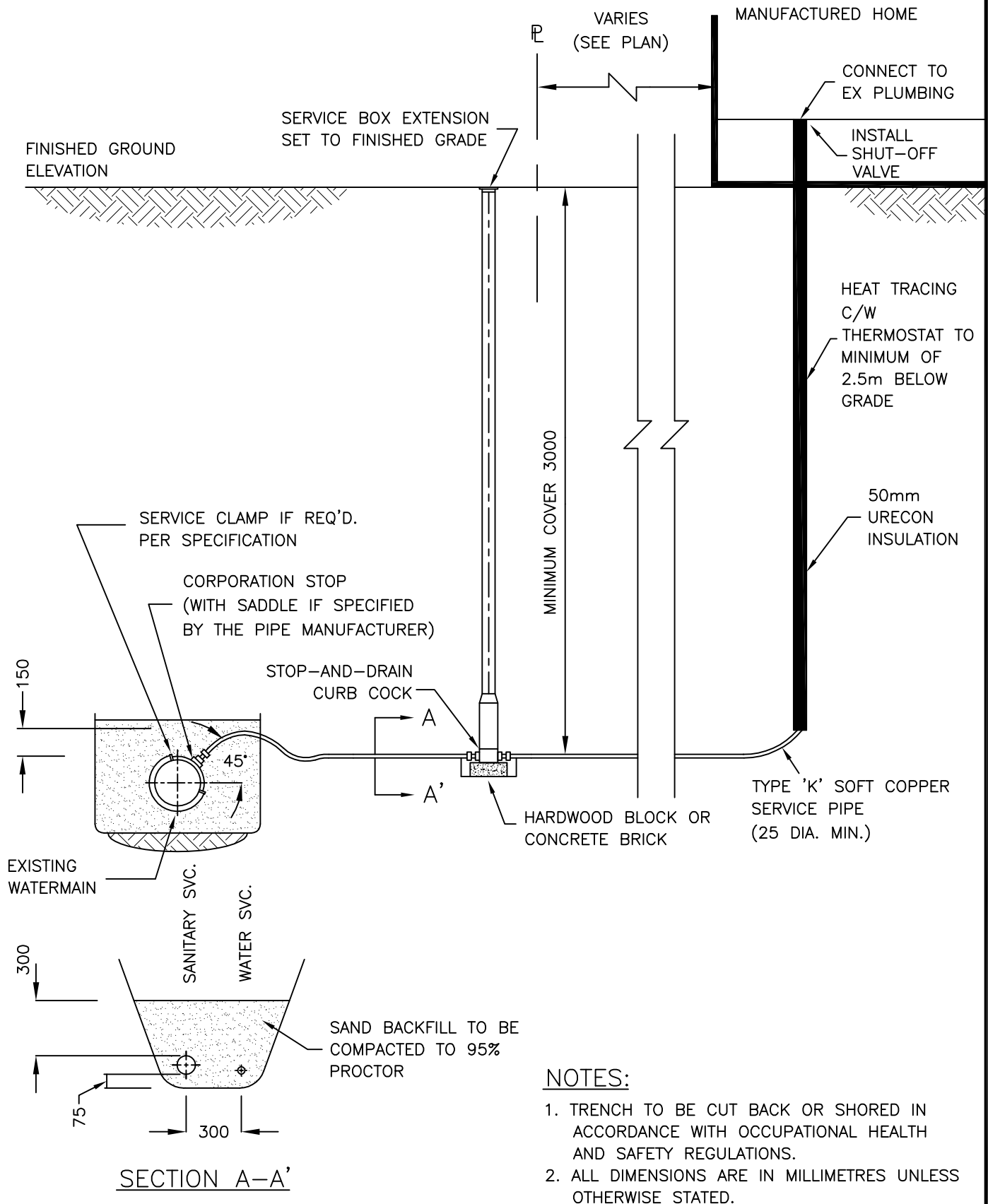
STANDARD DETAILS

SCALE: N.T.S.

DATE: SEPTEMBER 2010

STD. DWG NO.

8-103



TITLE:

WATER SERVICE CONNECTION MANUFACTURED HOME

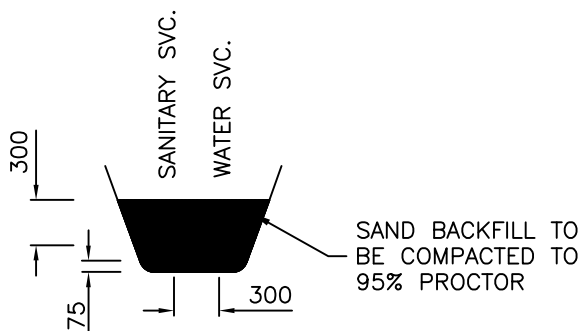
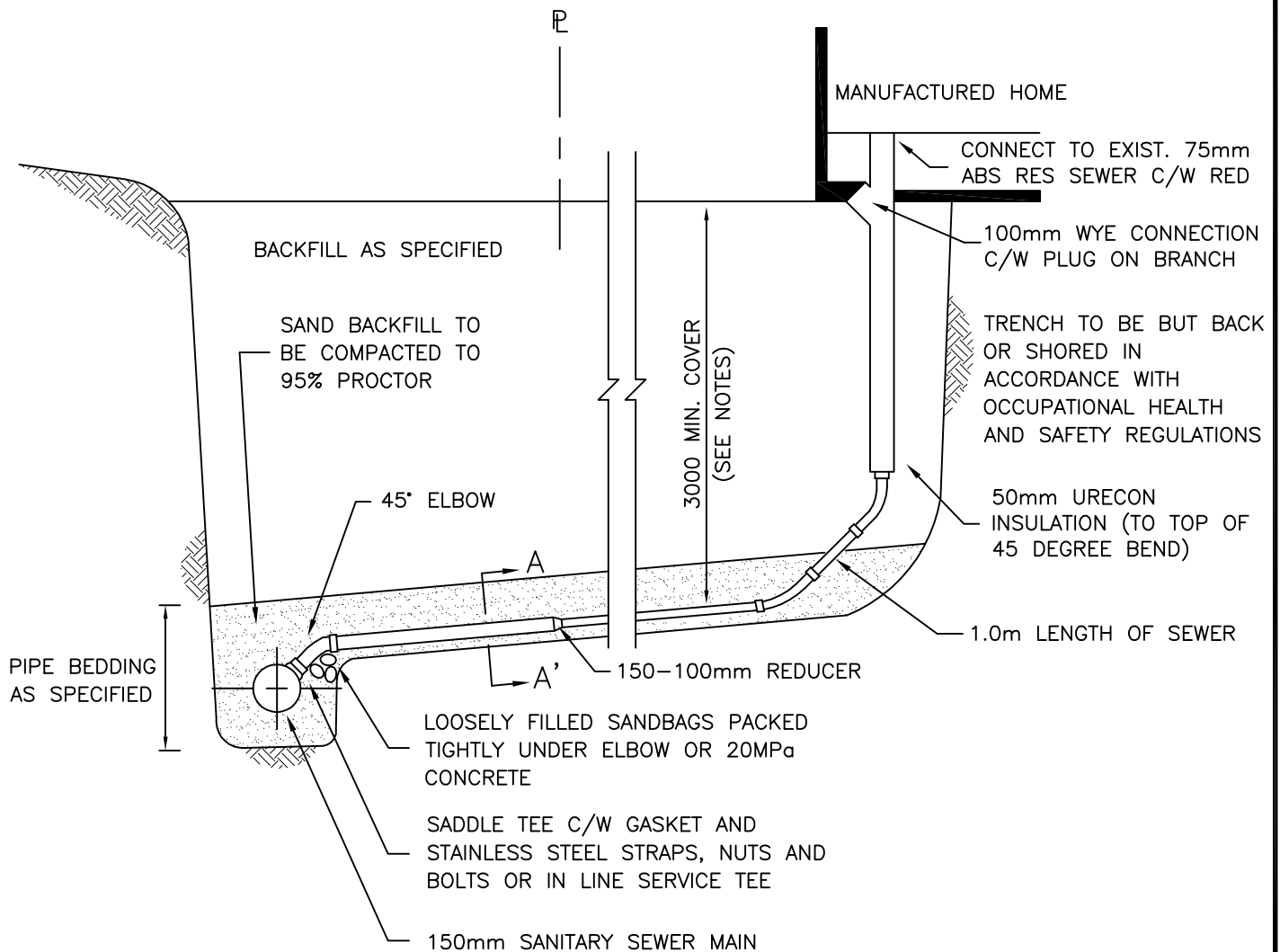
STANDARD DETAILS

SCALE: N.T.S.

DATE: SEPTEMBER 2010

STD. DWG NO.

8-200



SECTION A

NOTES:

1. MIN. SLOPE FOR 100mm DIA. PIPE IS 2%.
2. SERVICE CONNECTIONS SHALL BE 100mm UNLESS SPECIFICALLY SHOWN ON THE DRAWINGS.
3. 50mm URECON INSULATION WILL BE REQUIRED.
4. TRENCH TO BE CUT BACK OR SHORED IN ACCORDANCE WITH OCCUPATIONAL HEALTH AND SAFETY REGULATIONS.
5. ALL DIMENSIONS IN MILLIMETERS UNLESS OTHERWISE STATED.



TITLE:

SANITARY SERVICE CONNECTION MANUFACTURED HOME

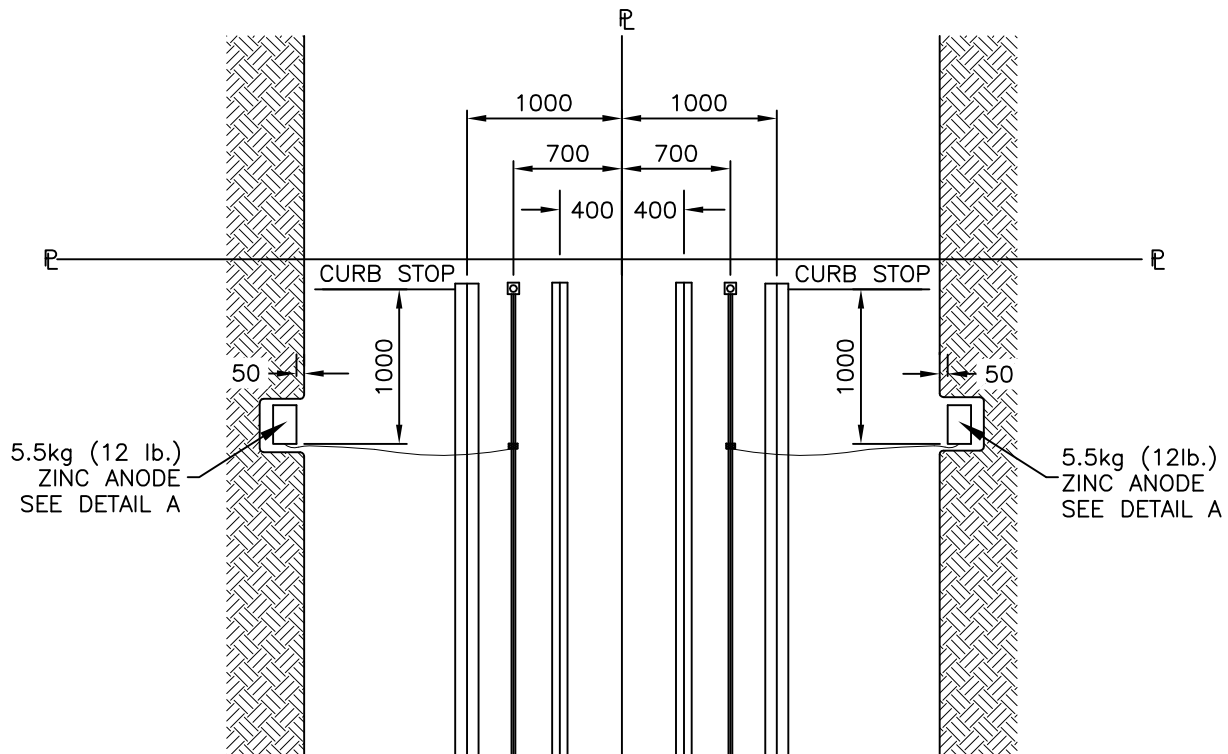
STANDARD DETAILS

SCALE: N.T.S.

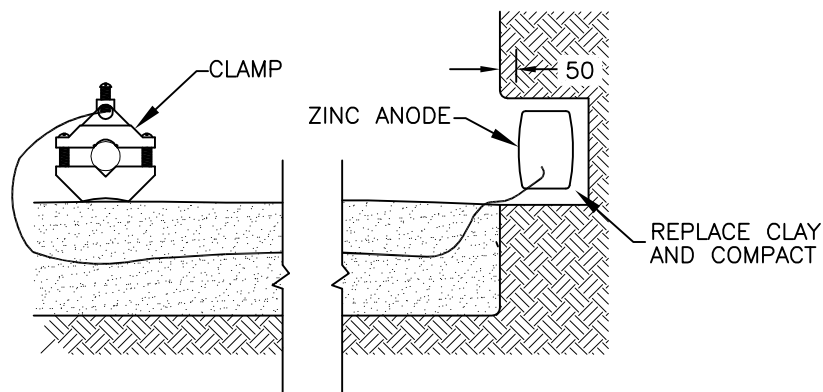
DATE: SEPTEMBER 2010

STD. DWG NO.

8-201



PLAN VIEW



DETAIL A

NOTES:

1. PIPE CLAMP TO BE ALL BRASS OR APPROVED EQUIVALENT
2. ZINC ANODES TO BE EMBEDDED INTO TRENCH WALL TO PROVIDE FOR A MINIMUM OF 50mm COMPACTED SOIL COMPLETELY AROUND ANODES.
3. ALL DIMENSIONS IN MILLIMETRES UNLESS OTHERWISE NOTED.



TITLE:

ANODE ON 50mm AND SMALLER
COPPER WATER SERVICE

STANDARD DETAILS

SCALE: N.T.S.

DATE: SEPTEMBER 2010

STD. DWG NO.

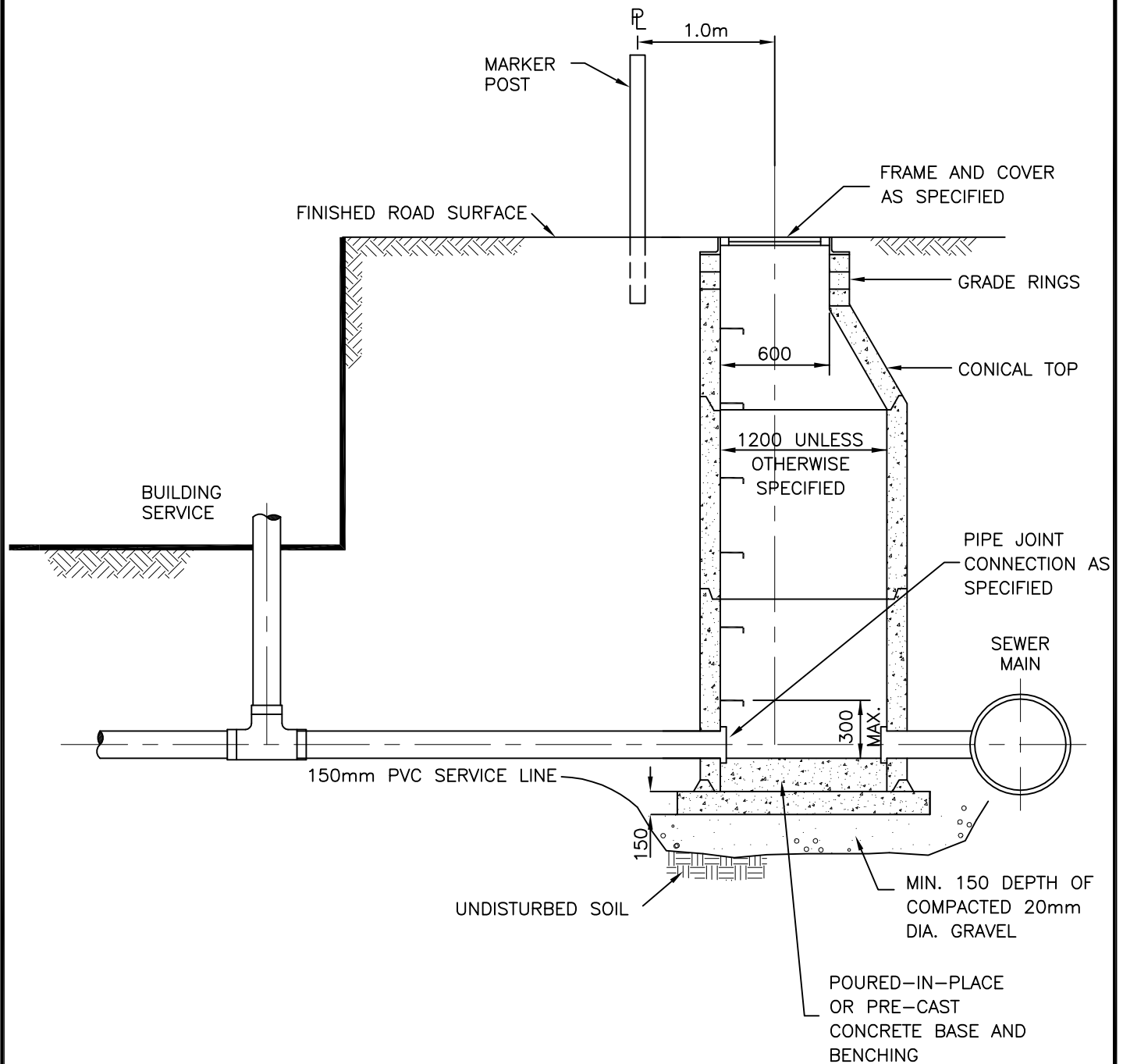
8-300

1. AN ADDITIONAL GOOSENECK IS REQUIRED AT EACH SEWER CROSSING.
2. MAIN STOP TAPS SHALL BE A MINIMUM OF 600mm APART, AND NO LESS THAN 300 TO A COUPLING OR COLLAR.
3. COPPER SERVICE SHALL BE ONE CONTINUOUS PIECE, UNLESS LENGTH EXCEEDS 30m MIN, AND ONLY THEN WILL A DOUBLE UNION BE ALLOWED.
4. ALL DIMENSIONS IN MILLIMETRES UNLESS OTHERWISE STATED.
5. M.D. MAY REQUIRE ALTERNATE LOCATION FOR CURB STOP.



TYPICAL 50mm AND SMALLER RESIDENTIAL WATER AND 150mm SANITARY SEWER

8-400



NOTE:
INSPECTION CHAMBER TO BE LOCATED IN A
NON-TRAFFIC AREA AND APPROPRIATELY MARKED



TITLE:

INSPECTION MANHOLE DETAIL

STANDARD DETAILS

SCALE: N.T.S.

DATE: SEPTEMBER 2010

STD. DWG NO.

8-500