

2022 FALL NEWSLETTER



County of Wetaskiwin No. 10

Mailing: Box 6960

Wetaskiwin, AB, T9A 2G5

243019A Hwy 13

Phone: 780-352-3321 Fax: 780-352-3486

www.county.wetaskiwin.ab.ca

facebook.com/wetaskiwincounty

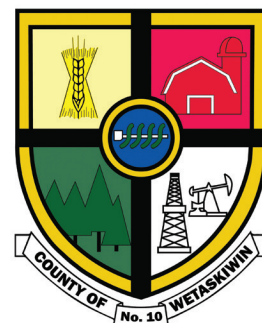


Table of Contents

Agriculture



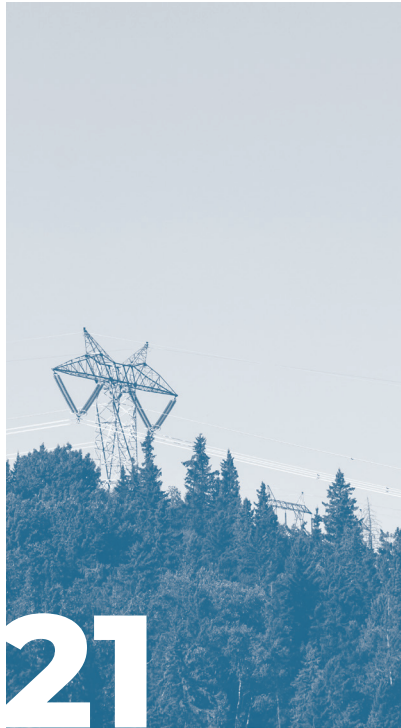
- 05**
- 06**
Agricultural Services
- 08**
Autumn Reminders
Online Survey
- 09**
ALUS news

Community



- 11**
- 12**
County Council
- 14**
Community Engagement
- 16**
Grant Support 2022

Financial



- 21**
- 22**
Financial Statements
- 24**
Utility Auto Payment
Plan (NEW)
- 25**
JEDI Newsletter

Recreational



- 27**
- 28**
Community Halls
- 30**
FCSS
- 31**
Taste of Summer

Services



- 33**
- 34**
Are You Prepared?
Summary of the Summer
- 36**
Snow Removal
- 38**
Public Works (NEW!)

Other Information



- 41**
- 42**
Notify Me

Message from the Reeve

What a great fall we are having. It is nice to see so many crops in before the first snow.

We are now a year into our new terms and are getting set to prepare the budget for 2023. The past year has followed the same pattern of the previous few years with many changes and uncertainty in the world. The County has managed to navigate these times with little disruption, and we are proud of the work the team has done. The biggest challenge facing the County is the same issue everyone is dealing with, the cost of doing business due to inflation. We have seen fuel prices rise substantially as well as equipment costs. Tenders have started to come in quite a bit higher than expected. Some we have outright rejected while others we have had to proceed with the higher costs. We realize that as costs increase often times

your means do not. Going forward Council will keep that top of mind in all future decisions.

There are some very exciting things in the works right now as well as opportunities for you to be involved. The Municipal Development Plan Open Houses are finally here. Please come out and have your voices heard regarding the future of land uses in your area. It is important for you to voice your concerns and ideas of what should or should not be happening on the landscape. Items such as subdivision of land, development focused areas and protection areas. Where should we be investing in infrastructure to support that growth? Where should industrial development or farming be prioritized? These and many more questions are in need of your opinion. We have released a

draft plan as a starting point for discussion that has been based on information we have gathered from other public engagements as well as professional advice. We look forward to hearing from you in person at one of the Open Houses.

We are continuing to develop contacts with businesses looking to expand and develop within the County and have had success over the past few years. We are investigating a new incentive program to help build our industrial assessment base.

Another opportunity we have been exploring is alternative waste management. There are technologies available to convert landfill waste into energy, bio fuel and carbon black with little to no emissions depending on the process used. We have looked at a few different options. These technologies, while still evolving, have in fact already been in use for over 20 years in Europe.

For those of you who don't already know we do have Report a Concern for all Public Works related issues. This is where you can submit an online form, email or phone in to notify staff of road and drainage deficiencies. They will create a service ticket and assign it to the appropriate staff member to address your concern. For more information flip to page 39 of this newsletter.

So lots of opportunities, challenges and changes to navigate but we are up to the task and excited to take them on. On behalf of Council and staff we hope you had a good year and wish you all the best in 2023.

— Reeve

Josh Bishop





Agriculture

Agricultural Services

Beaver Control

Beaver Control has been very active this year with one hundred and ninety-three (193) beaver trapped or removed. To date sixteen (16) dams have been breached from problem locations throughout the County.



Weed Inspection

Five Weed Inspectors were hired to inspect properties for Noxious and Prohibited Noxious Weeds throughout the County. There were 8,042 properties inspected, resulting in 17,137 weed letters advising of the weeds and the clean-up process.

No owners were sent weed notices for the 2022 year.



Rental Equipment

Rental equipment was well used this year especially the skunk traps, magpie traps and the pasture sprayers. The sprayers have been rented by producers from all over the County. Administration had the sprayers available from the County Office and the Winfield area. Several producers rented the sprayers from these locations.

Clean FARMS

Clean FARMS announced that over the next 3 years, Municipal pesticide container sites will eliminate having all containers collected at transfer stations and landfills and returned to the Alberta agricultural retail locations. Currently producers can get free large plastic bags from the retailer. These plastic bags hold approximately 45 containers and that makes collecting, storing, and transporting the containers easier.

www.cleanfarms.ca



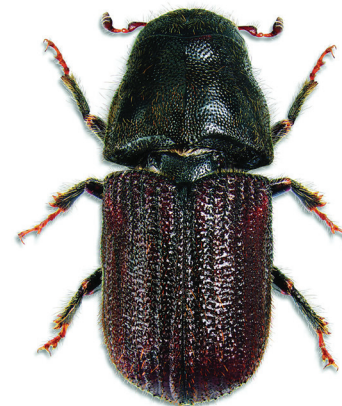
Roadside Programs

Roadside Spraying

The Roadside Spraying Program started on June 15th for Noxious Weeds, Prohibited Noxious Weeds, Brush and Sweet Clover. All Range Roads (north/south roads) North of Highway 13 were sprayed and completed on July 20th.

Roadside Mowing

The Roadside Mowing Program started on August 2nd with two tractors, side arms and fifteen-foot mowers cutting vegetation along County roads. Over 2,400 ditch miles have been mowed. One tractor with ten-foot pull behind mower cut Subdivisions, Hamlets, Transfer Stations and County properties. Over 2,400 ditch miles have been mowed.



Mountain Pine Beetle

Since the first discovery of Mountain Pine Beetle (MPB) back in 2018, the County has worked diligently along with your help towards managing the beetle in our area. Recent prolonged and bitter winter temperatures coupled with forest fires have assisted in the battle against MPB. Our Ag Services Department continues to offer information and direct support like workshops and on-site visits to our County residents to help identify attacked and/or infested pine trees with financial assistance from Alberta Agriculture and Forestry. As in previous years, verbenone pouches will be available for purchase in June 2023. If your name is on our list, we will be contacting you in spring 2023 to follow up and confirm orders. If you would like to be added to the list, please contact our Ag Department.

Contact Us

Director of Agricultural Services

Stephen Majek
(780) 361-6226
smajek@county10.ca

Sustainable Agriculture/ ALUS Program

Kim Barkwell
(780) 387-6182
kbarkwell@county10.ca

Horticulturist

Nicole Lancaster
(780) 352-3321 ext. 2290
nlancaster@county10.ca
*Available seasonally from
April 1- October 31*



Autumn Reminders

Shelterbelts prevent soil erosion, protect crops, buildings, people and animals from damaging winds, they trap snow and help filter ground water and manage runoff. There are many financial benefits to planting a shelterbelt within your property whether you are a small acreage owner or a large-scale producer. You can find resources through the County website under Ag Services to help you plan, design, and maintain your shelterbelt as well as an up-to-date list of tree and seedling suppliers.

While fall is busy time for harvesting fields it is also the time to start thinking about ordering trees for next year. With high demand and limited supply, suppliers have been selling out of stock before spring has even sprung. To ensure you receive trees in spring 2023 and avoid disappointment, place your order this fall or early winter. Check with individual suppliers for order deadlines.

Online Survey

We want to hear from you. Tell us what topics of horticulture you want to learn more about. Fill out our quick online survey and help us plan programming and workshops that benefit you. Our survey can be found on our county's main page or click on the following link: <https://www.county.wetaskiwin.ab.ca/hort-survey>

For inquiries about this survey or to provide feedback regarding ideas and suggestions relating to Horticulture between **November 1- March 31** please contact Naomi Finseth at nfinseth@county10.ca.

**DON'T FORGET
TO WATER YOUR
TREES BEFORE
FREEZE UP!!**

*They will thank you for it
next year.*

**Still need help or
have questions?**

**Get in touch
with Nicole our
Horticulturist.**

Contact info is on page 7

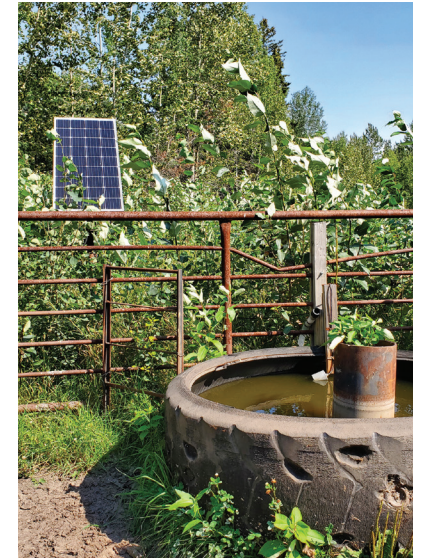
ALUS Project Tours

Registrants hopped on a school bus this summer and visited some local ALUS projects. Farmers described their project at each stop and participants learned about the work involved in establishing an eco-buffer planting, livestock fencing, off site watering, a grassed waterway and native grass planting plus an adaptive multi-paddock grazing pilot project. Thank you to everyone who participated in the ALUS project tours!

Farmers throughout Wetaskiwin and Leduc counties work with ALUS to create nature-based solutions. These projects help build flood and drought resilience, along with other positive environmental benefits like improving biodiversity and water quality. When referencing land directly adjacent to water bodies, biodiversity means more varied types of native, deep rooted plants. These roots hold the bank together, filter and trap sediment, and create structural layers that provide a home for species to thrive. As a result, the system is more able to cope with environmental stressors such as floods and drought, and provides cleaner water.

ALUS is a community-developed and farmer-delivered program offered in Wetaskiwin and Leduc counties through the sustainable agriculture program partnership. Recruitment of new projects and participants occurs yearly. A Partnership Advisory Committee (PAC) reviews projects and makes funding decisions.

Winter is a good time to contact the program coordinator to discuss how the ALUS program may fit your farm plans. Call Kim at **780-387-6182** or email kbarkwell@county10.ca or kimb@leduc-county.com





22

Community



County Council 2022



Division 1

Bill Krahn

bkrahn@county10.ca

780-312-4226 (C)



Division 2

Lynn Carwell

lcarwell@county10.ca

780-352-0589 (H)

780-312-0119 (C)



Divison 3

Dale Woitt

dwoitt@county10.ca

780-352-7429 (H) 780-360-2737 (C)



Divison 4

Josh Bishop

Reeve

jbishop@county10.ca

780-387-8483 (C)



Divison 5

Ken Adair

kadair@county10.ca

780-352-6318 (H) 780-361-6398 (C)



Divison 6

Kathy Rooyakkers

Deputy Reeve

krooyakkers@county10.ca

780-682-2353 (H) 780-514-9087 (C)



Divison 7

Lyle Seely

lseely@county10.ca

780-388-3894 (H)

780-621-1044 (C)

Community Engagement

MDP Review Update

The County of Wetaskiwin wants your input as we prepare a new Municipal Development Plan (MDP). Six public open houses are scheduled across the County where you can learn about the draft MDP, read the proposed policies, and find out how you can share your perspectives on the plan that will guide land use and development in the County for the next 10 to 20 years.

What is a Municipal Development Plan?

The MDP is an important planning and decision-making tool for the County. The MDP is the County’s long-range land use planning document, outlining direction and strategies to inform how the County will look, feel, and grow in the future. It guides decision makers when they consider land use and development matters.

What might be changing?

The County’s project team has prepared a draft MDP, based on Council and Administration input and considerable background research. Certain topics are particularly important to County residents and are included in the draft MDP. The draft MDP includes policies on the following areas of interest:

Protecting agricultural land and the County’s rural character.

- Discouraging the County’s best soils from being converted to uses other than agriculture.
- Identifying areas where agriculture is the preferred land use.
- Establishing different subdivision and development policies for the western and

eastern parts of the County based on soil conditions and topography.

- Clarifying where the County will and will not support new or expanded Confined Feeding Operations.

Supporting economic development.

- Encouraging innovative and value-added agricultural development.
- Encouraging commercial and industrial developments in appropriate locations.

Protecting important environmental features.

- Establishing setbacks from watercourses and waterbodies.
- Encouraging the retention of tree cover and natural vegetation in sensitive locations.

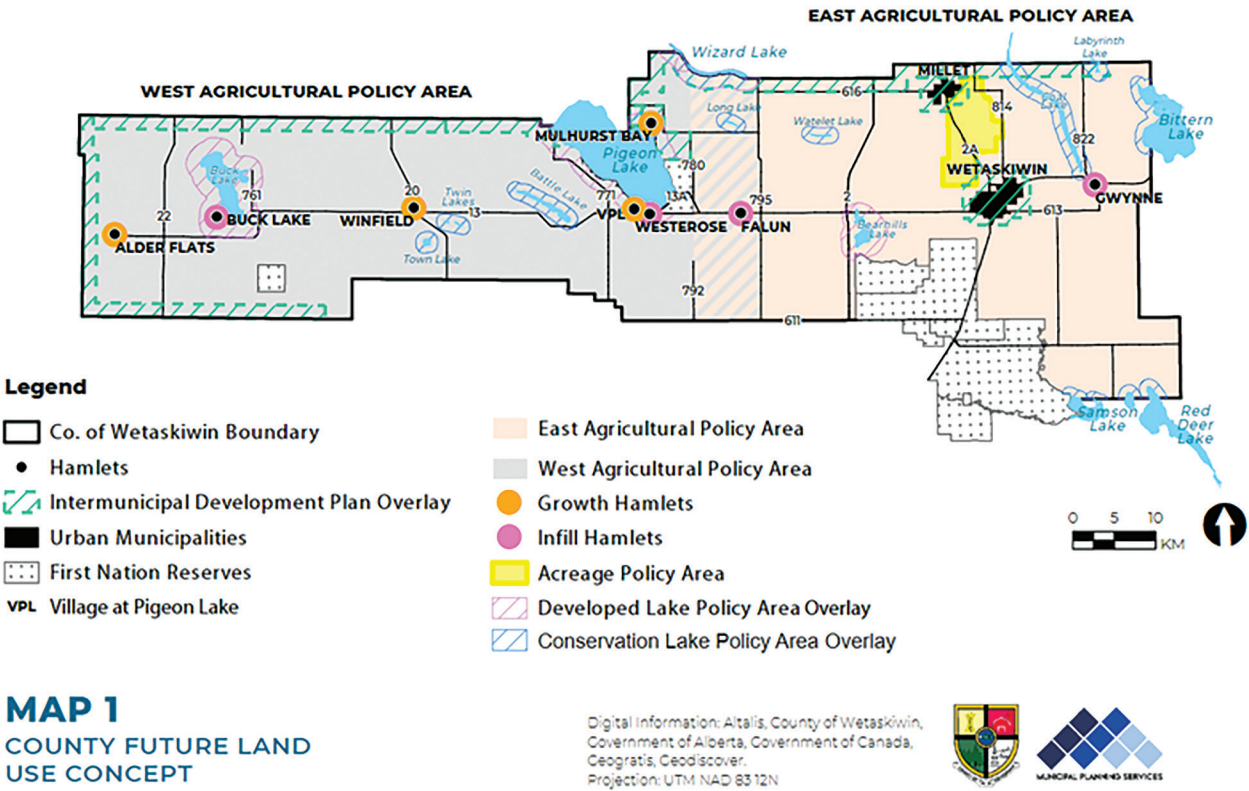
Supporting the right kind of growth in hamlets.

- Supporting growth in hamlets that have existing infrastructure capacity.
- Encouraging commercial development in hamlets to support the surrounding community.

Stewarding the County’s lakes responsibly.

- Establishing policies to protect the long-term health and wellbeing of the County’s lakes.
- Identifying lakes where new development is supported in a responsible manner and in appropriate locations.
- Identifying lakes where higher-intensity development is discouraged.

There may be other land use and development issues that are important to you. We encourage you to come out and share your thoughts to make



sure Council considers them prior to finalizing and approving the MDP.

How can you share your perspective?

There are six open houses scheduled across the County in the coming weeks. All open houses will run from 7:00–9:00 p.m. The events are as follows:

- Monday, October 17, 2022—Buck Lake-Community Hall
- Tuesday, October 18, 2022—Winfeld Agriplex Hall
- Wednesday, October 26, 2022—Falun Community Hall
- Thursday, October 27, 2022—Mulhurst Bay Community Hall
- Wednesday, November 2, 2022—Millet Agriplex Banquet Hall
- Thursday, November 3, 2022—Wetaskiwin Ag Society Barn

How will your feedback be used?

The feedback you share will be used to improve

the draft MDP before Council considers adopting the plan. Input from the open houses will be considered as the project team revises and refines the MDP. This might include rewording some policies to better reflect the County’s goals, deleting others where they are not needed, or adding new policies where more direction is required.

Your feedback will be reported to Council and shared publicly in a What We Heard Report. The report will be posted later this fall.

For more information, please contact:

Naomi Finseth, Communications Officer at 780-361-6220 or nfinseth@county10.ca

www.county.wetaskiwin.ab.ca/MDP-Review



Grant Support 2022

Approved Community MSI Projects (Municipal Sustainability Initiative)

2022 MSI Falun Community League—HVAC Improvement.....	\$26,250.00
TOTAL	\$26,250.00

FCSS (Family and Community Support Services) Grants

Wetaskiwin Victim Services—POLICY.....	\$5,031.00
Leduc & District Victim Services—POLICY.....	\$3,691.00
Alder Flats Buck Lake Public Library—2022 Programs.....	\$2,200.00
Alder Flats Elementary School—Metis Traditions Field Trip.....	\$600.00
Alder Flats Elementary School—One Book One School.....	\$550.00
Town of Millet Library Board—Parent Bonding Storytime	\$4,800.00
Breton and Area FCSS—Breton Women’s Wellness Day.....	\$1,000.00
Covenant Bay Bible Camp—Day Camp	\$5,425.00
Town of Millet Library Board—Children’s Summer Wellness Program.....	\$2,400.00
Lakedell Agricultural Society—Drive in Movie and Mini Chuckwagons.....	\$2,500.00
Lakedell Agricultural Society—Family 2023.....	\$2,774.00
Millet & District Historical Society	\$2,000.00
Breton and Area FCSS—Summer Youth Program	\$1,500.00
TOTAL	\$34,471.00

Library Grants—County Portion Only

Alder Flats/Buck Lake Public Library	\$8,400.46
Lakedell Area Community Library Society	\$9,580.55
Millet Public Library.....	\$14,161.09
Wetaskiwin Public Library	\$23,601.82
Winfield Community Library	\$10,760.64
TOTAL	\$66,504.56

Budgeted Intermunicipal Recreation Funding	
City of Wetaskiwin.....	\$565,000.00
Millet Recreation Centre.....	\$227,099.00
TOTAL	\$792,099.00

Agricultural Bursaries of \$1,000 are given annually to students who will be attending post secondary institutions related to Agriculture.

Please visit the website to view the updated recipients.

Charitable Organizations, Institution & Organization Grants

Royal Canadian Legion Remembrance Day Wreaths	\$750.00
Canteen Events.....	\$150.00
Wetaskiwin & District Victim Services	\$7,000.00
Farm Safety Centre Safety Smarts Program	\$2,600.00
STARS	\$16,818.00
Canadian Fallen Heroes Foundation (Silver).....	\$500.00
Wetaskiwin & County Sports Hall of Fame	\$200.00
TOTAL	\$28,018.00

Cemetery Operating & Maintenance Assistance Grants

Roseland Cemetery.....	\$920.00	Poplar Valley Cemetery	\$1,000.00
Maywood Cemetery	\$1,000.00	Dalby Cemetery	\$1,000.00
Malmo Mission Covenant Church	\$1,000.00	Lakedell Community Cemetery	\$1,000.00
Bunker Hill Cemetery Club.....	\$940.00	Branch of Trinity Lutheran	\$450.00
Peace Hills Zion Lutheran Cemetery	\$1,000.00	Siegel Hill Cemetery	\$1,000.00
Emmaus Lutheran Cemetery	\$1,000.00	Calvary Baptist Church	\$970.00
Mount Clare.....	\$1,000.00	Lone Ridge Community Cemetery Crooked Lake Cemetery Company.....	\$1,000.00
Ebenezer Baptist Church	\$1,000.00	Alder Flats Cemetery	\$1,000.00
Town of Millet.....	\$1,000.00	New Sweden Mission Church	\$1,000.00
Immanuel Lutheran Usona	\$510.00	St. Peter’s Lutheran Church	\$1,000.00
Vang Lutheran Church.....	\$1,000.00	Hegge Community Cemetery	\$800.00
Grace Lutheran Church.....	\$1,000.00	Bonnie Glen Cemetery.....	\$900.00
Lutheran Synod	\$730.00	St. Norbert’s Parish Council.....	\$600.00
TOTAL		\$24,820.00	

Chamber of Commerce Grants

Pigeon Lake Regional Chamber of Commerce.....	\$10,000.00
Leduc, Nisku and Wetaskiwin Regional Chamber of Commerce.....	\$7,750.00
TOTAL	\$17,750.00

Recreation Zone Grants

Zone 1	
Alberta Central Railway Museum Society—Facility Operations	\$2,000.00
Angus Ridge Community Hall—Facility Operations	\$4,000.00
Central Community Hall—Facility Operations.....	\$4,000.00
Wetaskiwin and District Amateur Football Organization.....	\$5,215.00
Wetaskiwin Ski Club—Utility Assistance	\$4,000.00
TOTAL	\$19,215.00

Zone 2	
Falun Community League—Policy 72.0.6	\$13,907.00
Fletcher Community Association—Policy 72.0.6.....	\$1,923.13
Lakedell Agricultural Society—Policy 72.0.6	\$12,758.30
Lone Ridge Community Hall—Policy 72.0.6	\$3,353.74
Mulhurst Bay Community League—Policy 72.0.6	\$9,451.46
Pipestone Community Society—Policy 72.0.6.....	\$9,990.87
Usona Ag Society—Policy 72.0.6	\$10,436.47
Brightview Community Church	\$2,565.00
Falun Community League—Falun Minor Ball	\$4,500.00
Lakedell 4-H Lighthouse—4-H Lighthouse Funding	\$1,800.00
Lakedell Agricultural Society—Country Fair.....	\$1,045.00
Lakedell Agricultural Society—Curling Expenses	\$1,462.50
Lakedell Agricultural Society—Functional Fitness	\$535.00
Lakedell Agricultural Society—Gymkhana Club.....	\$1,157.00
Lakedell Agricultural Society—Halloween Party.....	\$475.00
Lakedell Agricultural Society—Junior Curling	\$1,862.50
Lakedell Agricultural Society—Summer Horse Show Series	\$3,000.00
Lakedell Agricultural Society—Town & Country Bonspiel.....	\$1,700.00
Lakedell Agricultural Society—Youth Summer Horse Camp.....	\$2,125.00
Lone Ridge Community Hall Association—Care Quilt Program.....	\$250.00
Lone Ridge Community Hall Association—Fall Supper.....	\$800.00
Mulhurst Community League—Ball Diamond Revitalization	\$7,500.00
Mulhurst Legion Branch 246—Christmas Event.....	\$1,500.00
Pigeon Lake Soccer Club—Soccer Program.....	\$6,000.00
PLACE Society—Outdoor Skating Rink Winter/Summer Usage.....	\$6,000.00
Wizard Lake Watershed—Canada Day, 2022 Winter/Summer Cleanup, Signage, Buoy Install/Removal.....	\$893.00
TOTAL	\$106,990.97

Zone 3	
3 Lakes Skating Club—Equipment, Coaches, Insurance, Advertising	\$2,500.00
Winfield and District Ag Society—Facility Operations	\$10,862.00
Winfield and District Ag Society—Gymkhana Club	\$190.00
Winfield and District Ag Society—Summer Saddle Series Barrel Jackpot.....	\$2,000.00
Winfield Baseball Association—Club start up, Insurance, Year End Awards	\$2,500.00
Winfield Community Sustainability Initiative—Summer Dance/Family Murder Mystery Dinner Theatre.....	\$1,550.00
Winfield Minor Hockey Association—Referee Training, Expenses, Player development, Socks, Goalie Gear.....	\$2,500.00
Winfield Recreational Hockey—Jerseys	\$297.00
Yeoford Community Centre—Maintenance and Upkeep	\$5,000.00

TOTAL	\$27,399.00
--------------	--------------------

Zone 4	
3 Lakes Skating Club—Equipment, Coaches, Insurance, Advertising	\$2,175.00
Alder Flats Buck Lake Public Library—Capital Purchases, Books, DVD’s, Book Shelves.....	\$1,087.00
Alder Flats Buck Lake Public Library—Insurance Coverage	\$897.00
Alder Flats Community Agricultural Society—Community Dance	\$1,044.00
Alder Flats Community Agricultural Society—Insurance	\$5,272.00
Alder Flats Community Agricultural Society—Kitchen Roll Down.....	\$1,087.00
Alder Flats Fish & Game Association—Insurance, Septic, Maintenance.....	\$3,136.00
Alder Flats Fish & Game Association—Upgrade and Create New Sites	\$1,740.00
Buck Lake Agricultural Society—Operating and Maintenance Costs	\$10,401.00
Buck Lake Senior Citizens Drop-In Centre—Foot Care, Floor Curling & Crafts.....	\$1,070.00
Buck Lake Senior Citizens Drop-In Centre—Utilities, Insurance, Janitorial, Repair & Maintenance	\$5,850.63
Buck Lake Stampede Society—Insurance & Power	\$1,294.00
Buck Lake Stampede Society—Surveying for Provincial Lease.....	\$3,704.00
Piecemakers Quilt Club—Charity Quilt Making.....	\$750.00
Western Pioneer Senior Citizens Association—Utilities, Insurance, Maintenance.....	\$4,789.00
Winfield Baseball Association—Insurance, Yearend, Maintenance	\$2,751.00
Winfield Minor Hockey Association—Referee Training, Expenses, Player development, Socks, Goalie Gear.....	\$4,132.00
TOTAL	\$51,179.63

Zone 5	
Hillside Community Club—Facility Operations	\$2,600.00
TOTAL	\$2,600.00



Financial

Financial Statements

County of Wetaskiwin No. 10
Consolidated Statement of Financial Position
As at December 31, 2021

	2021	2020 Restated
Financial assets		
Cash and equivalents (Note 2)	33,134,955	29,042,824
Property taxes receivable (Note 3)	1,912,977	1,934,246
Trade and other accounts receivable (Note 4)	4,296,721	5,969,307
Tax sale proceeds (Note 5)	134	115,528
Patronage reserves	13,572	13,572
Debt charges recoverable (Note 6)	5,786,623	6,067,048
	45,144,982	43,142,525
Liabilities		
Accounts payable and accrued liabilities (Note 8)	3,658,446	2,873,216
Reclamation liability (Note 9)	5,494,575	5,222,091
Deposit liabilities	666,040	1,671,593
Contaminated sites	750,000	750,000
Tax sales proceeds liability (Note 5)	134	115,528
Employee benefit obligations (Note 10)	372,558	461,712
Deferred revenue (Note 11)	11,472,126	9,255,766
Long-term debt (Note 12)	7,984,977	7,222,932
	30,398,856	27,572,838
Net financial assets	14,746,126	15,569,687
Non-financial assets		
Tangible capital assets (Schedule II)	99,917,089	89,425,300
Inventory for consumption (Note 14)	10,341,725	8,782,867
Membership fee (Note 15)	400,000	400,000
Prepaid expenses	166,393	155,339
	110,825,207	98,763,506
Accumulated surplus (Schedule I)	125,571,333	114,333,193

Commitments and contingencies (Note 20)

Approved on behalf of Council:

Original Signed _____ Reeve

Original Signed _____ Deputy Reeve

The accompanying notes are an integral part of these financial statements

County of Wetaskiwin No. 10
Consolidated Statement of Operations
For the year ended December 31, 2021

	2021 Budget (Note 23)	2021	2020 Restated
Revenue			
Net municipal property taxes (Schedule III)	19,952,648	20,916,989	19,965,669
User fees and sale of goods	3,097,183	3,906,578	3,422,441
Other	754,630	1,531,755	517,969
Government transfers (Schedule IV)	1,182,727	1,036,375	2,126,055
Sales to other governments	3,059,590	839,711	506,890
Gain on sale of tangible capital assets	415,260	541,483	408,019
Investment income	500,000	436,133	509,190
Rental	274,000	290,651	247,154
Permits, licenses, and fines	208,667	247,767	466,573
	29,444,705	29,747,442	28,169,960
Expenses			
Public works	31,613,831	11,592,855	15,030,528
General Government	4,545,535	6,087,150	6,305,685
Restructuring transaction (Note 21)	-	-	5,454,892
Utilities	8,396,128	3,907,125	2,518,115
Protective services	1,803,825	2,620,357	2,344,216
Recreation and cultural services	2,338,769	1,739,244	1,457,381
Agriculture Service Board	932,300	988,922	1,036,758
Planning and development	912,117	932,321	860,046
Family and Community Support Services	484,511	353,040	427,569
Cemetery	53,354	53,394	53,354
	51,080,370	28,274,408	35,488,544
Excess (deficiency) of revenue over expenses before other	(21,635,665)	1,473,034	(7,318,584)
Other			
Government transfers for capital (Schedule IV)	22,084,613	9,765,106	7,185,264
Excess (deficiency) of revenue over expenses	448,948	11,238,140	(133,320)
Accumulated surplus, beginning of year	114,333,193	114,333,193	114,466,513
Accumulated surplus, end of year	114,782,141	125,571,333	114,333,193

The accompanying notes are an integral part of these financial statements

Utility Auto Payment Plan — (UAPP)

NEW!

The County of Wetaskiwin No. 10 is now offers a Utility Auto Payment Plan (UAPP). This plan enables you to pay your bill for water, sewer and waste collection through an electronic transfer from your bank account. Bi-monthly, your account will be debited, and you will be charged the actual utility charges for 2 months. Your account will be debited bi-monthly the actual 2 month utility charges.

To **pre-register** for the 2023 year, please fill out the online form at: www.county.wetaskiwin.ab.ca/UAPP

This plan will come into effect on the **January to February 2023** bill that will come out at the end of February 2023. See payment schedule below:

Utility Auto Payment (UAPP) Schedule

Bill Run Month(s)	Bill Mailed By	Auto Payment Date
January & February	End of February	March 30th
March & April	End of April	May 30th
May & June	End of June	July 30th
July & August	End of August	September 30th
September & October	End of October	November 30th
November & December	End of December	January 30th

For additional information, please contact our Utility Clerk at utility@county10.ca or by phone at (780)-352-3321 ext. 2287.

JEDI NEWSLETTER

Joint Economic Development Initiative

Fall 2022

WWW.JEDIALBERTA.COM

JEDI is here
to guide
you in
business

JEDI provides tools for regional industrial businesses & agriculture producers to succeed! If you would like to be included in JEDI's e-mail list for upcoming seminars & events as well as funding & business resources please e-mail and/or follow JEDI on Social Media.

jmiller@jedialberta.com

@JEDIALberta

www.JEDIALberta.com

P: 780.335.5334



FIELDS TO FORKS

This summer JEDI was excited to work with Bell Media on a Fields to Forks project featuring three JEDI Region Agricultural Businesses, Familia Brewing, Hound Dog Hops and Longshot Distilling Company. The three businesses featured by Fields to Forks are prime examples how businesses can work together to ensure success!

You may have seen the Fields to Fork feature air on CTV Edmonton or it can be viewed on JEDI's website <https://jedialberta.com/news-events/fields-to-forks/>



Familia Brewing



Longshot Distilling Company



Hound Dog Hops

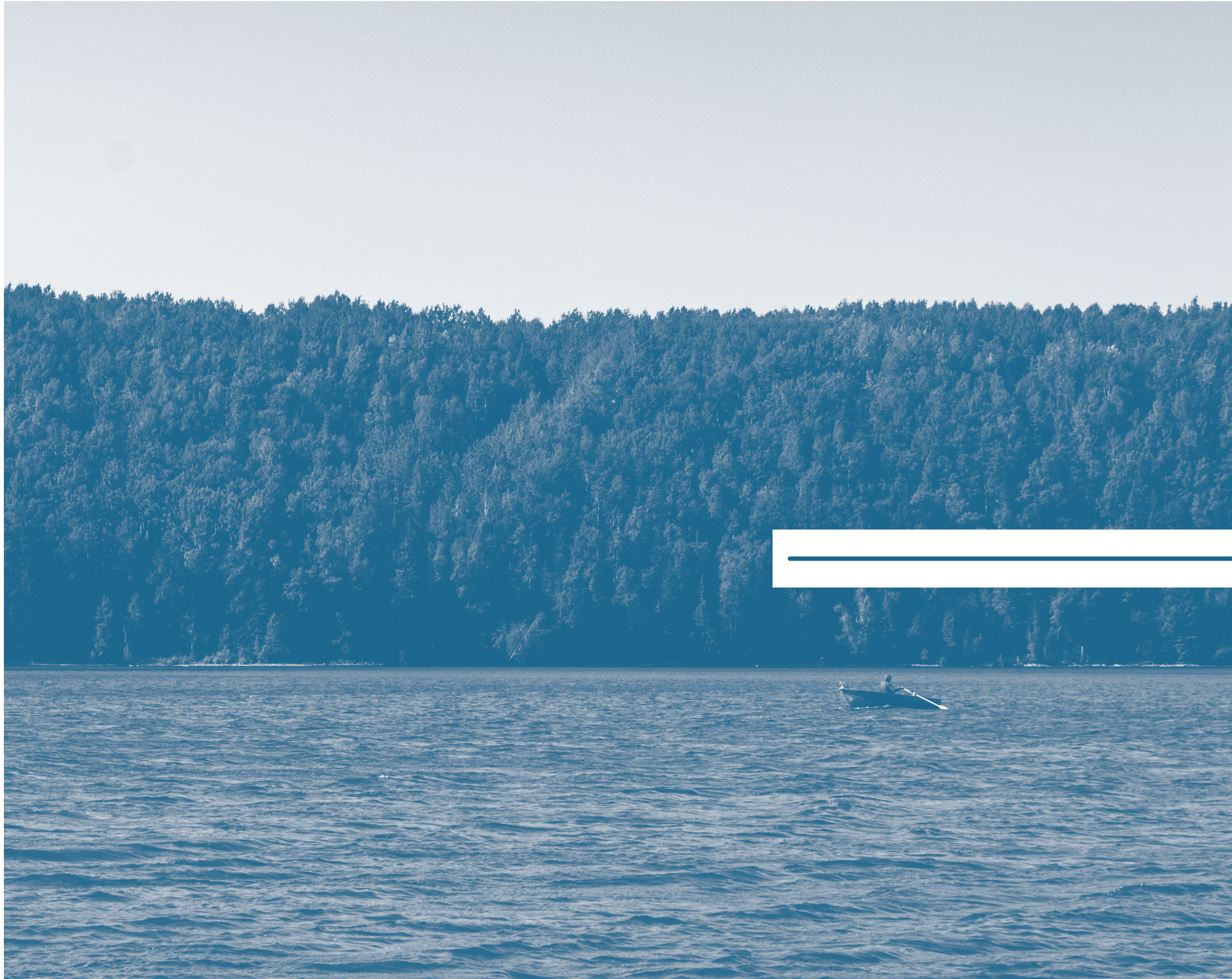
BUSINESS RETENTION & EXPANSION (BRE) PROJECT

JEDI is in the process of conducting BRE visitations with industrial businesses in the Town of Millet & County of Wetaskiwin. Resulting BRE data will indicate the future plans/needs of local businesses and how businesses view the Region's overall business climate. In turn, this information will be used to respond to individual business needs and to plan future economic development initiatives.

THE JEDI AG FORUM IS BACK!!

The event will be held Thursday, November 24, 2022, at the Wetaskiwin Ag Grounds. Check back for updates as the speaker line-up and schedule of events is announced. If you wish to sign up for e-mail updates as more information becomes available, please email cthompson@jedialberta.com or scan the QR Code below:





4

Recreational

Community Halls

The County of Wetaskiwin is home to a number of Community Halls and Facilities operated by independent boards and non-profit groups. These locations are important hubs of the community and often host events which bring residents together. A complete list of Halls and contact information is available on our website at county.wetaskiwin.ab.ca, search “Community Halls”.

List of Community Halls

Alder Flats Ag Society/Alder Flats Community Centre

Alder Flats Legion

Angus Ridge Community Hall

Buck Lake Agricultural Society

Buck Lake Community Centre

Buck Lake Senior’s Drop In Centre

Central Community Centre

Falun Community Centre

Fletcher Community Hall

Haultain Hall

Hillside Community Centre

Lakedell Ag Society & Community Centre

Lone Ridge Community Hall

Ma Me O Beach Hall

Mulhurst Bay Community League

Mulhurst Bay Legion

Pigeon Lake Lions Club

Pipestone Community Centre

Porto Bello Community Hall

Usona Agricultural Centre

Vang Lutheran Community Grounds

Western Pioneer Senior Citizens Association

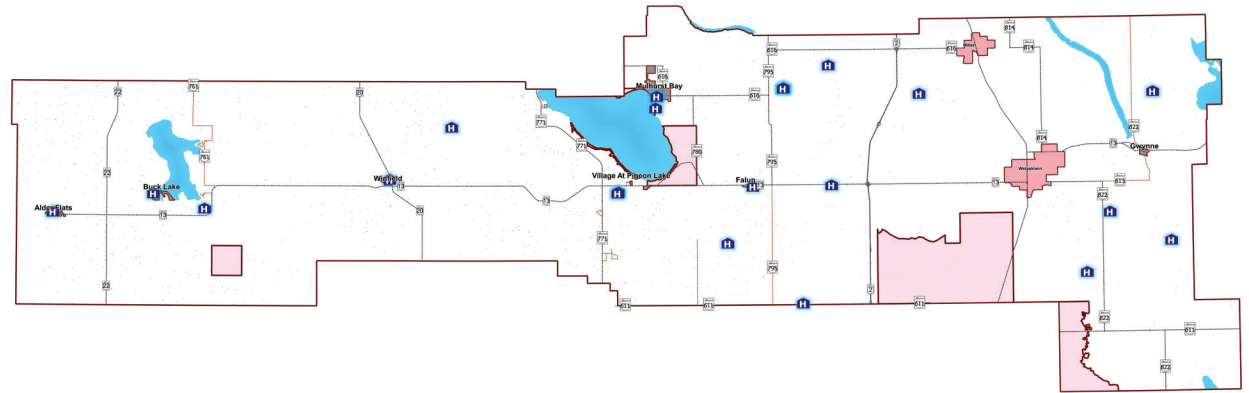
Wetaskiwin Agricultural Society

Winfield Arena & Ice Rentals

Winfield Agriplex & Ag. Grounds Bookings

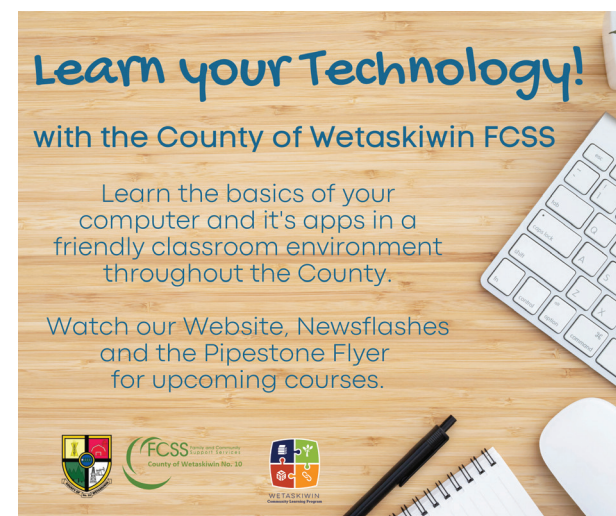
Yeoford Community Hall

Map of Community Halls



FCSS Social Needs Assessment Master Plan Update

On September 8, 2022, the County of Wetaskiwin hosted a round table event to gather information for the current Social Needs Assessment Master Plan. A variety of agencies, clubs and individuals joined together to discuss several key questions revolving around different social issues the participants identified within our communities. The group recognized both programming and community strengths; and challenges and areas of concern. Opportunities for potential collaboration were established to encourage interagency support measures and prevent programming overlap. The question of “What does success look like with respect to changes in social needs in the community?” was also presented to the group and engaging discussion ensued. The insights gathered will be compiled and included, in addition to survey results, within the final document for Council’s review and approval later this winter. Visit our website to view the final plan once available.



Every great community event starts with a committed group of volunteers. In this case, it was a group of friends sitting around a firepit one summer thinking of ways to give back to their community. From that fireside chat, the Taste of Summer was born. What started as a backyard idea has grown into a must attend community event with approximately 500 people attending annually.

Saturday, August 20, 2022, marked the 8th annual Taste of Summer at Pigeon Lake. “It is very satisfying when you see everyone there,” said Darrel Bohlander, one of the organizers of Taste of Summer, “it’s a great community event where everyone is in a good mood.” In 2022, the community raised \$27,643. All money raised stays in the community and is used for important projects such as bunker gear for the South Pigeon Lake Fire Department.



The Taste of Summer has raised \$152,987.80 over the past eight years with 100% of the money raised staying in our community. This event is the definition of volunteers helping volunteers. From the cooks to the music, everyone at Taste of Summer is there to give back to their community. It’s a good old fashion picnic that you don’t want to miss. Watch for next year’s Taste of Summer in August 2023.

Do you have a community event happening in 2023?

Share the details with our Community Program Coordinator at **780-352-3321** or fcssadmin@county10.ca.



Services

Are You Prepared?

An emergency or disaster can strike at any moment. Are you prepared? Could you take care of your family's basic needs for 72 hours in the event of an emergency?

Emergencies and disasters can range from hours to multiple days. There are many ways you and your family can become more prepared. You can build emergency kits that you can grab and go, and you can make sure you have enough supplies at home in case you have to take shelter.

The Government of Alberta has great resources for making an emergency plan, sheltering in place and managing farm and livestock during a disaster.

Visit: <https://www.alberta.ca/emergency-preparedness.aspx> for more information.



Summary of the Summer

Here is a summary of events that stood out for the County Peace Officers (CPO) over the past few months. Overall, CPO's have been rather busy while at the same time being shorthanded. This was compounded by having to train a new officer who started in July.

Speeding Vehicles

While on patrol near Buck Lake, a black pick-up truck was recorded at 162 km/hr near the Fire Department. Instead of stopping for the Officer, the vehicle fled at a high rate of speed. Local police were notified but the truck was never caught.

In September, another vehicle was recorded at 160 km/hr on Highway 22 near the Clearwater County border. Instead of stopping, the vehicle continued without stopping and crossed into the on-coming lane after the officer turned off his lights. The

officer believes these 2 events are connected.

While on patrol west of Wetaskiwin, a CPO recorded a BMW sedan at 175 km/hr. The officer was unable to stop it and advised both another CPO and local Police. A few minutes later, the other CPO observed the same sedan at 232km/hr on Range Road 240 (a posted 80 km/hr roadway) near the Leduc County border. An extensive search for the car was conducted by 3 RCMP detachments but it was never found.

While on patrol near Winfield, CPO observed a small car at a very high rate of speed and passing numerous vehicles in the rain during darkness. CPO recorded speeds between 140 and 165 km/hr between Winfield and the Brazeau County border. The vehicle was subsequently stopped near Breton finding it unregistered and the driver in possession

of a small amount of cannabis within easy reach. The driver was charged with numerous offences including a summons for speeding.

Recently while on patrol east of Wetaskiwin, a CPO observed a car on the newly paved RR240 that leads to the G3 Grain Facility. The car, estimated at 100 km/hr, went through the stop sign at the Highway 613 intersection and almost caused a multi car collision. The driver was charged.

While on patrol in Division 3, west of Wetaskiwin, CPO observed a quad at a very high rate of speed. The quad took off at over 100 km/hr after the officer tried to stop it. As it turned out the quad and operator, a male youth, matched a description in numerous other complaints where warnings were issued. The Officer attended the residence of the youth and spoke with the parents. A few minutes later, the youth returned home while still operating the machine. The Officer issued a summons to the 14-year-old for failing to stop for a Peace Officer.

Commercial Vehicle Enforcement

A 60 ton crane was caught on a County road south-east of Wetaskiwin with no permits or authorization. The unit was weighed by the Officer and the carrier was charged for overweight offences under the *Traffic Safety Act*.

Alberta Transportation/Dangerous Goods Branch sent information regarding an unsafe carrier operating around the County. CPO's were able to stop commercial vehicles belonging to the company finding the information to be substantiated. This was a great example of two agencies working together to ensure safety legislation compliance on area highways.

A commercial vehicle, fully loaded with drilling pipe, was caught on the Golf Course Road which is a 50% road ban. The CPO weighed the unit finding it substantially overweight. The driver was charged.

A small concrete truck was stopped near Millet for a safety inspection. The driver was found to have a suspended licence and was not complying with an ignition interlock condition. The driver was served a summons and the unit was seized as per the *Alberta Traffic Safety Act*.

New CPO units

Back in 2020, the County ordered two new CPO patrol vehicles to replace older units that were well beyond their service life. Due to COVID delays, it took 18 months for the vehicles to arrive and be equipped. They entered service this summer.



Snow Removal On County Roads

County of Wetaskiwin has 2,028 kilometres of roadways, 77 subdivisions, 8 Hamlets which are cleared with a combination of equipment from truck snowplows to graders.

There are 12 grader beats in the County, with an average of 100 miles (160 km) per beat.

Snow Clean up Efforts

Once all County roads have been opened, crews and equipment begin the longer process of road-way clean-up.

Graders make clean-up passes to breakdown the windrows along the ditches, to help improve line of sight and to move snow further into the ditch for future snow storage and proper spring drainage.

Graders are also equipped with specialized ice blades (Sandvik) to help break up the ice to allow gravel to surface—to provide for better traction on ice packed roads.

Public Works crews do their best to ensure that roadways are opened as quickly as possible; however, time frames will vary depending on the severity and duration of the storm. Please be patient and always drive to the road conditions.



PLEASE BE ADVISED:

Plowing snow from your yard into the County right of ways is **not permitted**. Concerns such as liability, safety and equipment damage are factors. Plowing snow into the ditches or onto the side of the roads puts our employees and the safety of the traveling public at risk.

Thank you for your cooperation in this matter.

FAQs

Will the County send a plow to your road if you call to ask?

No, the priority is to clear the County’s road network as efficiently and quickly as possible, followed by general clean-up.

How long will it take to clear the roads after a snowstorm?

This varies. If there is a lot of snow, or if the snow is heavy and moist, or if there is a strong wind, it can take longer to move the snow and fight drifts – and can take several days to complete road clearing.

Depending on road conditions, it can take up to 72 hours for a grader to complete its entire beat after it stops snowing. However, strong winds can close a road before the 72 hours have lapsed. Timing can be severely affected by the amount of snow, temperature, continuing bad weather such as wind causing drifts or by poor visibility.

Where/When do the plows start?

After snow exceeding 10 cm STOPS, then the plows start. Grader operators alternate their starting location, which means some roads are cleared first one time, and others the next time.

What if I need to get to town and the roads are impassable?

If you have a medical condition or if you have a job where you are required to get to town every day, please plan for unexpected bad weather. All roads can become impassable with extreme weather.

Are bus routes plowed first?

No, bus routes are not set as a priority as the County considers every road equally important. School buses travel on many miles of roads and it is inefficient and costly to assign a priority to one road over another.

Snowplowing of Private Driveways

As of September 1, 2018, the County no longer offers the snowplowing of private residential driveways. The County strives to limit their work to public property and leave private property work to private enterprise. A list of Private Contractors who are willing to provide snowplowing services for private residents of the County is provided on the County website.

County or Provincial Road?

Road maintenance in the County of Wetaskiwin is a cooperative effort, at both the local and provincial level.

Local roads include Township and Range Roads and associated bridges along with roads in hamlets and subdivisions.

All provincial numbered highways are under the jurisdiction of the Province of Alberta (Alberta Transportation). Private contractors are hired by the province to operate and maintain all numbered highways.

Please see the list below of provincial roads that are maintained by MainRoad (contracted by Alberta Transportation) in the County of Wetaskiwin:

Hwy 2	Hwy 22	Hwy 771
Hwy 2A	Hwy 611	Hwy 780
Hwy 13	Hwy 613	Hwy 795
Hwy 13A	Hwy 616	Hwy 814
Hwy 20	Hwy 761	Hwy 822

For road maintenance issues or concerns on ALL provincial numbered highways, please contact: **Mainroad Alberta Contracting at 1-877-875-3263 (24 hours a day/7 days a week).**



Public Works

NEW! Permit to Work on County Right of Ways

The County recognizes that residents may want to do work on County right of ways for the purpose of ditching, brushing, landscaping, etc.

Residents who wish to do work on County right of ways will be required to fill out a permit application. Once a permit application has been received by Public Works, a pre-inspection will be scheduled by a Public Works staff member.

Once the pre-inspection is complete, the Director of Public Works will determine whether the permit is approved or rejected. If approved, you will be provided with a permit number and valid dates of when work is required to be complete. A post inspection will be required after all work is complete.

To request a permit application, please contact the Public Works Call Centre at 780-361-6241 or email pwadmin@county10.ca.

NEW! Road Construction Projects

All new road construction projects are posted on the County website www.county.wetaskiwin.ab.ca under Road Construction Projects as they are approved by Council.

Updates will be posted periodically. To stay informed, go to the following link to sign up and receive notification when projects are added and updates are posted:

<https://www.county.wetaskiwin.ab.ca/list.aspx>

Stay Informed-Newsflash-County Projects

The Public Works department mails notices to landowners who will be directly affected by construction projects.



NEW! Report a Concern

The County of Wetaskiwin has launched a new online form to report non-emergency concerns related to Public Works. (i.e. potholes, rough road/road maintenance, culvert/drainage issues, road side clean-up, etc.) Simply fill out and submit the Report a Concern Form on the County website. Describe the issue you wish to report including a detailed description and/or a photo. Once the form is submitted, our Public Works department will create a service ticket and assign it to the appropriate staff member to address your concern.

The County of Wetaskiwin is committed to providing quality services and a positive experience for the public.

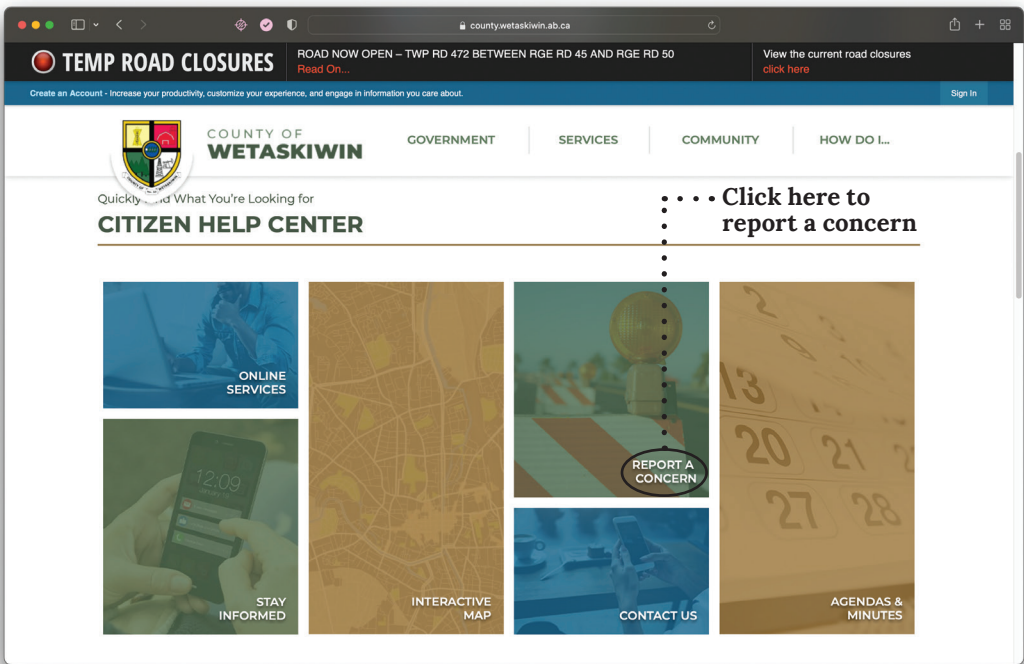
To help address and track the high volume of requests that come in daily, a SERVICE TICKET will be created and assigned to the appropriate staff member to inspect or follow up on the request.

There are 3 ways in which the public can reach our Public Works Department to have a SERVICE TICKET created: **If possible, please submit your concerns in writing (Report a Concern, email or letter) to ensure that important information doesn't get missed.**

1. Report a Concern on the County website – www.county.wetaskiwin.ab.ca/concern
2. Email PWAdmin@county10.ca
3. Call the Public Works Call Centre at 780-361-6241

For after hours concerns (after 4:30 p.m.) please call **780-352-0005**

The County of Wetaskiwin is a respectful workplace, and any form of abuse towards our staff will not be tolerated. For quality assurance, all calls, emails and report a concern submissions will be tracked and recorded.





———— **Other Information**

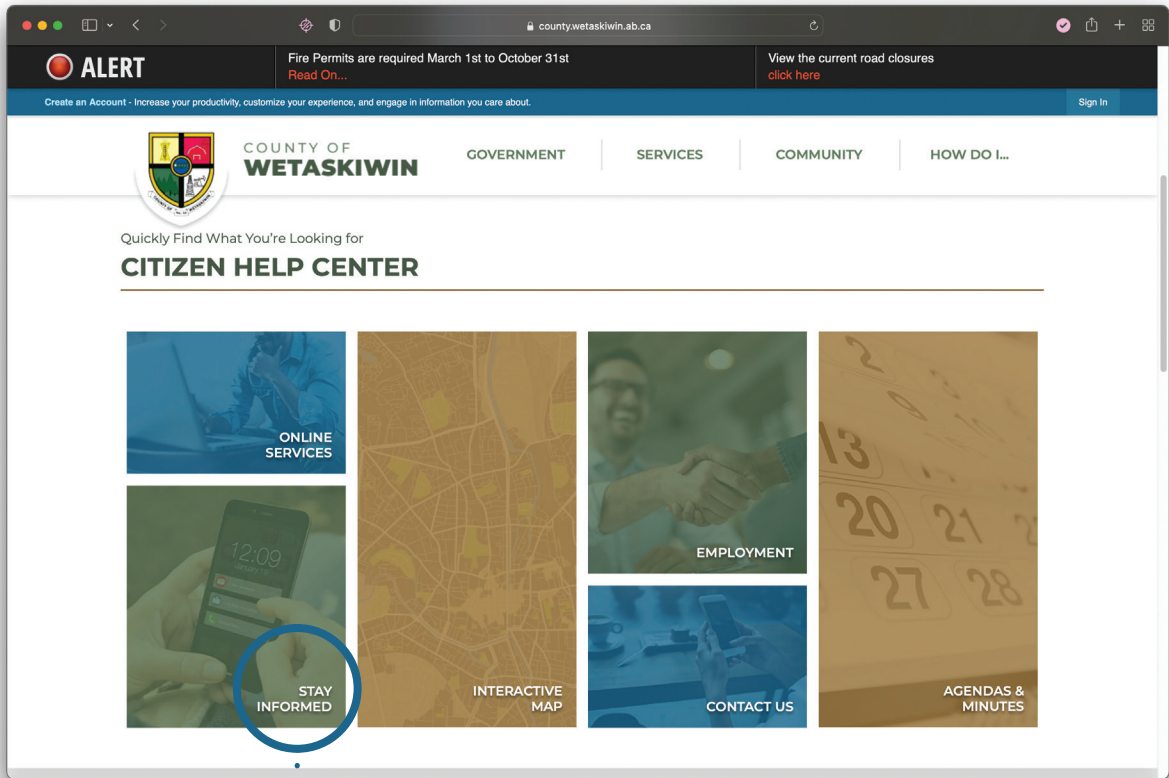
Notify Me

In an effort to increase communication, the County has refreshed our Notify Me categories on our website.
<https://www.county.wetaskiwin.ab.ca/list.aspx>

Sign-Up to Stay Informed

Through Notify Me residents can sign up to receive a variety of notifications via email or text message.

The County has recently added new categories to the News Flash section including agricultural news, community events, Council highlights and Utility updates.



Click here to sign-up for notifications

Sign-Up Online

1. Enter your email address and click sign in.
2. If you would like to receive notifications by text message instead of email click the box below and enter your phone number and select save.

If you need help signing up
call 780-361-6220 or email
nfinseth@county10.ca

1

Notify Me®

1. Type your email address in the box and select **Sign In**.
2. If you want to receive text messages enter your phone number and select **Save**.
3. To subscribe or unsubscribe click and/or next to the lists to which you wish to subscribe/unsubscribe.

Available Lists

Please sign in to subscribe, unsubscribe, or manage your subscriptions

Email Address

2

Your Profile Information

Email Address

john.smith123@gmail.com

☒ I prefer to receive HTML emails when available

Phone Number

780-123-4567

Ex: 555-555-0123. Standard text messaging rates apply.

Save

Unsubscribe from All Lists

Click Icon to Subscribe

To subscribe select the icon next to the name of the category you would like to subscribe to.

1. Select the **envelope** to subscribe for **emails** OR select the **phone** to subscribe to **text messages**.
2. Once you subscribe to the topics you want to see notifications about, you will receive an email confirming your subscription.

**You can unsubscribe or add subscriptions at any time.*

Alert Center

METHOD	LIST NAME
	Emergency Alert
	Fire Bans
	Road Bans/Haul Restrictions
	Road Closures

Click icon to subscribe

Click to subscribe to Text Messages

Click to subscribe to emails

Staff Directory

Main Office/General Inquiries
780-352-3321 or 1-800-661-4125

Public Works Call Centre
780-361-6241

Complaint & After Hours
Dispatch
780-352-0005 or 1-800-665-0338



Rod Hawken
Chief Administrative
Officer (CAO)
rhawken@county10.ca
780-361-6225



Jeff Chipley
Assistant CAO
jchipley@county10.ca
780-361-6223



Eric Hofbauer
Director of Finance
ehofbauer@county10.ca
780-361-6228



Geoff Lynch
Director of Leisure &
Community Services
glynch@county10.ca
780-361-6227



Neal Sarnecki
Director of Planning &
Economic Development
nsarnecki@county10.ca
780-361-6235



René Boutin
Director of Assessment
Services
rboutin@county10.ca
780-361-6233



Neil Powell
Director of Public Works
npowell@county10.ca
780-361-6241



Brian Anderson
Public Works Manager
of Operations
banderson@county10.ca
780-361-6241



Stephen Majek
Director of Agricultural
Services
smajek@county10.ca
780-361-6226



Mike Zajac
Director of Emergency
Services
mzajac@county10.ca
780-361-6240



Shawna Frederickson
Manager of
Information Services
sfrederickson@county10.ca
780-361-6229



Naomi Finseth
Communications
Officer
nfinseth@county10.ca
780-361-6220



County of Wetaskiwin No. 10

Mailing: Box 6960

Wetaskiwin, AB, T9A 2G5

243019A Hwy 13

Phone: 780-352-3321

Fax: 780-352-3486

www.county.wetaskiwin.ab.ca

facebook.com/wetaskiwincounty