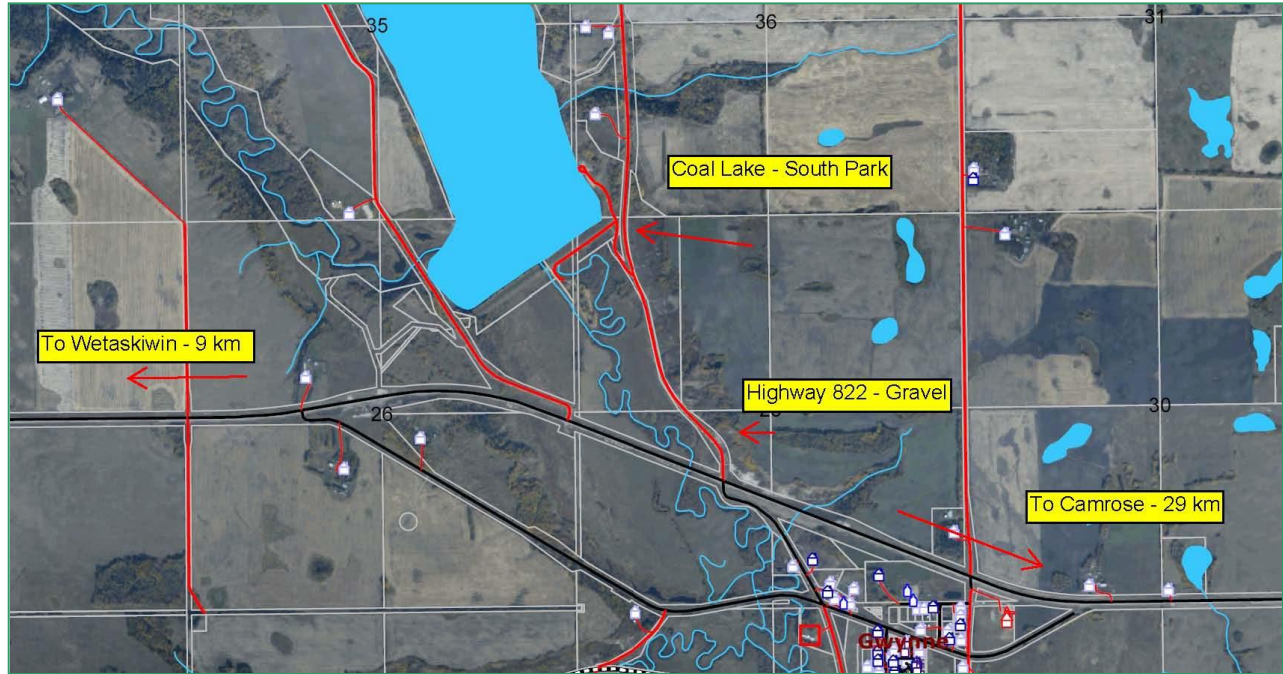


Coal Lake - South Park

Sandra Johnston
780-781-6152



Rates: \$25.00/night
Services: Camping, no hook-ups, Fishing, free wood, outhouses, boating

Directions:

1. From Wetaskiwin travel 9 km East on Highway 13, watch for signs - park will be on left hand side of Highway
2. From Camrose travel 29 km West on Highway 13 - park will be on right hand side of Highway