

# 2025 SPRING NEWSLETTER

---



## County of Wetaskiwin No. 10

Mailing: Box 6960

Wetaskiwin, AB, T9A 2G5

243019A Hwy 13

Phone: 780.352.3321 Fax: 780.352.3486




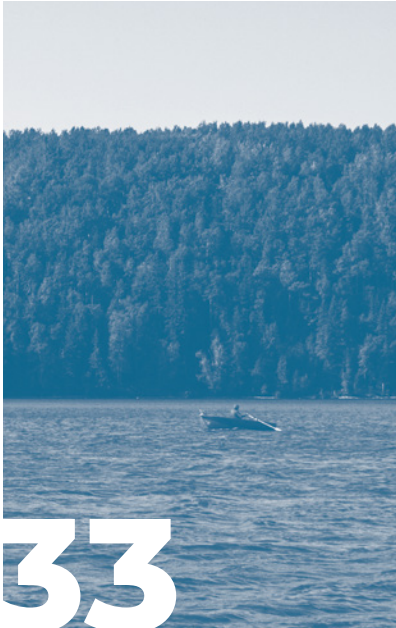

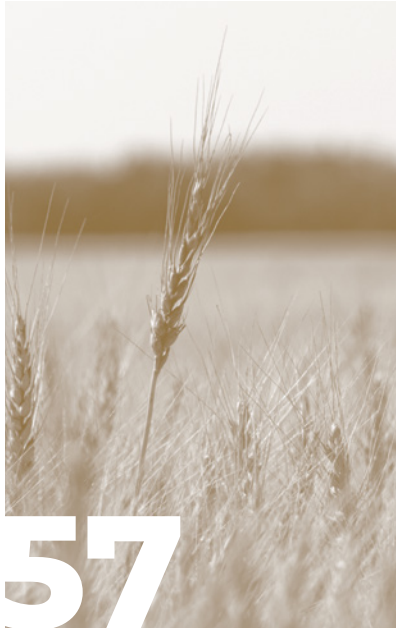
[www.county.wetaskiwin.ab.ca](http://www.county.wetaskiwin.ab.ca)

[facebook.com/wetaskiwincounty](https://facebook.com/wetaskiwincounty)

Find us on LinkedIn @ County of Wetaskiwin



# Table of Contents

Agriculture	Community	Financial	Recreational	Services	Other Information
 <b>05</b>	 <b>11</b>	 <b>25</b>	 <b>33</b>	 <b>40</b>	 <b>57</b>
<b>06</b> Agricultural Services	<b>13</b> 2025 County Election	<b>26</b> Assessment Map	<b>34</b> Recreation Enhancements	<b>42</b> Fire Services	<b>58</b> Notify Me
<b>09</b> ALUS	<b>14</b> County Council	<b>27</b> UAPP Public Notice	<b>36</b> Camping in Wetaskiwin	<b>44</b> News Release Protective Services	<b>60</b> Staff Directory
	<b>16</b> Joint News Release	<b>28</b> Council Salaries JEDI	<b>38</b> Campgrounds	<b>46</b> Public Works	
	<b>19</b> Community Program & Events Guide			<b>49</b> Road Capital Projects	
	<b>22</b> Planning & Development			<b>52</b> Utilities	



# Message from the Reeve

Spring is here early and I'm looking forward to a great start to the growing season. With the snow gone, our beautiful landscape will flourish with colour very soon. Growth comes in many different forms and the County has been focused on growing forward in many different ways. Over the past few years, we have been laying the groundwork to shape the changes we want to see within the County of Wetaskiwin. Starting with updating the Municipal Development Plan and just this past year updating the Land Use Bylaw. Over the next decade we will start to see what impact these changes have made.

Unlike most rural municipalities, the County of Wetaskiwin has a much higher percentage of residential properties compared to our non-residential. This places a high tax burden on the residents and leads to less than competitive rates placed on our existing businesses. Our goal is to spread that burden out further among

a larger base of industrial assessment so that we can become more competitive. The changes we have made will make it easier to navigate the regulatory process and provide certainty to potential businesses looking to locate within the County.

Economic development is a critical priority for the County. With over 2,000 kms of roads and 197 bridges, there is a massive maintenance bill that needs to be paid, and we need more development to help share the load. To that end we are investing time and resources into strategies that help drive investment. Whether it's increasing our recreational attractions such as the newly developed walking trails at twin lakes or investing in tourism promotions such as the "Discover Wetaskiwin County West", increasing visitors to the County will support our existing businesses and attract new ones.

We are also meeting with site selectors and business leaders to showcase the County as a viable opportunity in the industrial sector. One of our biggest initiatives we are currently working on is a feasibility study to connect a regional water system in partnership with the Town of Thorsby. They currently have an under-utilized water license for the North Saskatchewan river and together we could bring efficiencies to multiple systems in the region. Our agreement with Sustane technologies is still in place and is progressing slowly but diligently. This will be a generational shift in how we deal with waste and recycling but will definitely take some time to ensure we get it right. We have met with multiple ministries and have made progress navigating the complex regulatory framework a project such as this creates.

This year, Council has allocated the resources necessary to support the rehabilitation of 40km of local roads.

20km will be completed utilizing our in-house crews and equipment with the remaining 20km completed by contractors. This work is our largest road rehabilitation campaign to date and will address many problem areas throughout the County.

We are continuing to look for innovative ways to do business and have recently installed new technology onto one of our gravel trucks. It is a hydrogen injection system that will increase fuel economy, clean the engine and increase the service life of the vehicle. This test pilot project will be monitored over the next couple of years to ensure that all the claims are substantiated. If successful, the plan would be to roll this technology out across the entire fleet. These are just a few of the many projects we are working on and we will continue to keep you informed as things develop.

— Reeve

*Josh Bishop*







# Agriculture



# Agricultural Services

## Pest Control

### Richardson Ground Squirrel (RGS) Control – aka ‘gophers’

In 2023, Health Canada cancelled the registration of strychnine for RGS control, which means you can no longer buy or use it in Canada. That leaves the question: what else can I do? An Integrated Pest Management approach is always the best bet for maximum effect. Poisons are likely the best way to initially deal with large infestations. Other options include: Rozol and Ramik Green, multi feeding anti-coagulants requiring the use of bait stations; also Burrow Oat Bait, a single feeding asphyxiant. Ask about these products at your local farm supply store. Read instructions carefully and always follow directions for use of all poisons. Only use registered control

products. With all poisons, timing is key! Results are best when RGS first emerge (March & April), up until green up. After green up, bait uptake drops off drastically. For smaller infestations or after poison use, consider trapping, shooting (if allowed in your area), or hiring a certified professional to use fumigants such as Phostoxin or Rocon. Also consider encouraging natural predators like coyotes, foxes and hawks.

### Mountain Pine Beetle

Due to the extremely low risk of Mountain Pine Beetle in the County of Wetaskiwin, Verbenone pouches will **NOT** be available through the County.

## Coyote Control

Due to some compliance issues, Compound 1080 has been recalled by Health Canada. 1080 will NOT be available until further notice, and was the only toxicant registered for coyote control. Since poison is a last resort control method, producers experiencing coyote predation problems are still encouraged to reduce conflict through: herd surveillance, corralling at night, deadstock removal, use of guard animals, fencing, and lethal control. Coyotes may be hunted (but not trapped), without a licence, at all times of the year throughout the province: a) by a resident who has right of access to hunt on lands that are not public lands within the Green Area; b) by the owner or occupant of privately owned land, on the privately owned land; c) by a person maintaining livestock on public land, on that public land. A resident or registered trapper may also trap coyotes October through February. All other laws regarding firearms and trapping must be followed.



## Beaver Dam Removal

The County hires a trapper each year for the removal of beaver, the destruction of beaver dams, and unplugging culverts affecting County Infrastructure. Blasting may occur as early as April and continue until mid-November or freeze-up. If a road allowance is affected due to beaver activity on private land(s), trapping of beaver and blasting beaver dams may take place provided proper permission is obtained.



## Roadside Spraying

In 2024, spraying roadside ditches on all township (E/W) road within the County was completed on August 4. On behalf of Alberta Transportation and Economic Corridors, the County shoulder sprayed all Alberta Highways west of Highway 795. In 2025, the County plans to be spraying all of the backslopes of these highways as well as all gravel Highways (such as 761, 792). In 2025, all North/South range roads North of Highway 13 will be sprayed.

For further information, please contact Stephen Majek, Director of Agricultural Services at **780.361.6226**.



## Roadside Mowing

There are 2400 miles of grass to be mowed in the ditches along County roads. A Contractor mows approximately 1200 miles west of 795, while the County mows the other 1200 miles east of 795 themselves. This program starts in July and is completed by the end of September.

### Mowing Subdivisions, Hamlets, Transfer Stations, Lagoons, and County Properties

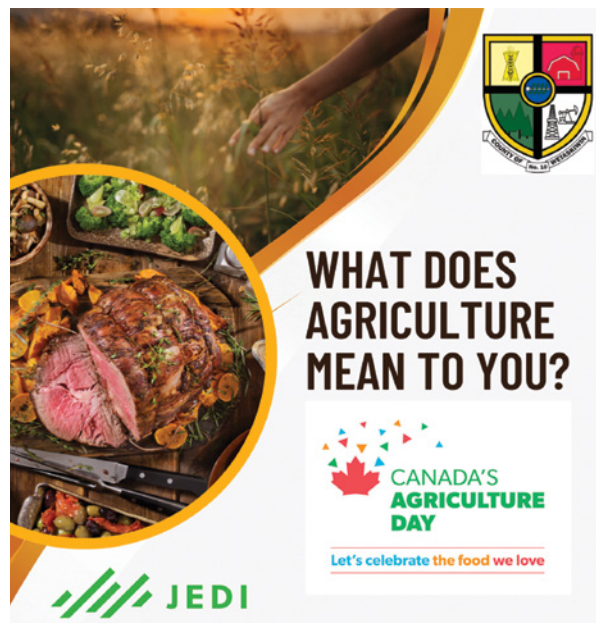
The County mows all Subdivisions, Hamlets, Transfer Stations, Lagoons, and County Properties once per year using a 10' mower. This program starts at the beginning of July and is completed by the end of August.

## Contact Us

**Director of  
Agricultural Services**  
Stephen Majek  
780.361.6226  
smajek@county10.ca

**Sustainable Agriculture/  
ALUS Program**  
Kim Barkwell  
780.387.6182  
kbarkwell@county10.ca





Canada's Agriculture Day was February 11, 2025. The idea behind Canada's Agriculture Day is to honor those that bring food to our table and the contributions of agriculture to our nation!

To recognize Canada's Agriculture Day this year, County of Wetaskiwin and JEDI staff created a fun fact sheet highlighting food and farming in the County and shared the fact sheet with interested grade four classrooms. There were over 400 packages distributed to grade four students in schools and home school groups throughout the region! Teacher survey responses were few, but they were all very positive. Staff were proud to showcase the importance of agriculture in our municipality and recognize the hard-working farmers that live here.

**Alberta EFP**  
BUILDING ON A SOLID FOUNDATION  
ENVIRONMENTAL FARM PLAN

## PLANNING FOR THE FUTURE OF YOUR FARM

The Environmental Farm Plan (EFP) WebBook, is an online educational system that guides producers step by step to build their EFP. The system is conveniently laid out with online resources at each step to give you all the information you need to make decisions about your farm.

Once your plan is complete, submitting it to your technician to review is as simple as clicking a button. When your plan has been approved the online system will provide you with a checklist of everything you wish to do. Then when you have accomplished some or all of your goals, you can update your plan in minutes, making the renewal process seamless and easy.

AN ARECA INITIATIVE  
WWW.ALBERTAEFP.COM



## Weed Inspection

Under the Provincial Legislation known as the Weed Control Act, the County of Wetaskiwin has been delegated the authority by the Province of Alberta to inspect and enforce weed management within its boundaries. The Service Board employs Weed Inspectors from May until September to complete these inspections and issue Weed Inspection Reports or Weed Notices, as required. In 2025, the Agricultural Service Board will be inspecting properties in Divisions 3,4,5,6 and 7.

The County of Wetaskiwin along with Clearwater County are co-hosting a Weed Workshop on May 14 from 7-9:00 p.m. in Buck Lake. Attendees will hear and learn about weeds in the area as well as control methods and potential herbicide options. Attendees will also be able to purchase herbicides for weed control in Range and Pasture from Clearwater County at a discounted rate.



Orange Hawkweed



Oxeye Daisy



Join

# ALUS

**THE ALUS ADVANTAGE**  
**COMMUNITY LEADERSHIP**  
**DELIVERS LOCAL SOLUTIONS**

**SUSTAINING AGRICULTURE, WILDLIFE, AND NATURAL SPACES FOR COMMUNITIES AND FUTURE GENERATIONS**

ALUS helps cost-share the establishment of beneficial management projects and practices, providing an annual payment for the management and maintenance of the project.

**Kim Barkwell**  
ALUS Coordinator  
780-387-6182  
kbarkwell@county10.ca

ALUS.ca





**Community**



# You are invited to the Wetaskiwin Open House!

## When

Thursday, May 8, 2025  
11:00 a.m. – 2:00 p.m.

## Where

Located at the County Office across  
from the Reynolds Alberta Museum

## What

Free BBQ  
Prizes  
Fun for the whole family

# You are invited to the Buck Lake Open House!

## When

Wednesday, August 20, 2025  
Tax Collection:  
9:00 a.m. – 2:00 p.m.  
Open House:  
11:00 a.m. – 2:00 p.m.

## What

Free BBQ  
Prizes  
Fun for the whole family

## Where

Located at the Buck Lake Community Hall

# 2025 County Election

## Have your say on Election Day!

The Municipal Election for County Council will take place on Election Day:  
Monday, October 20, 2025.

## Did you know?

The County Council is comprised of 7 duly elected residents representing  
the 7 Divisions in the County. Councillors serve the County for a 4-year term.

## Candidates

Those interested in running must first submit a 'Notice of Intent Form' before  
completing and submitting the 'Candidate Nomination and Acceptance.'  
Nominations will cease at 12 noon on September 22, 2025.

Voting will be between 10:00 a.m. and 8:00 p.m. at  
specified voting stations throughout the County.

# YOUR COUNTY YOUR VOTE

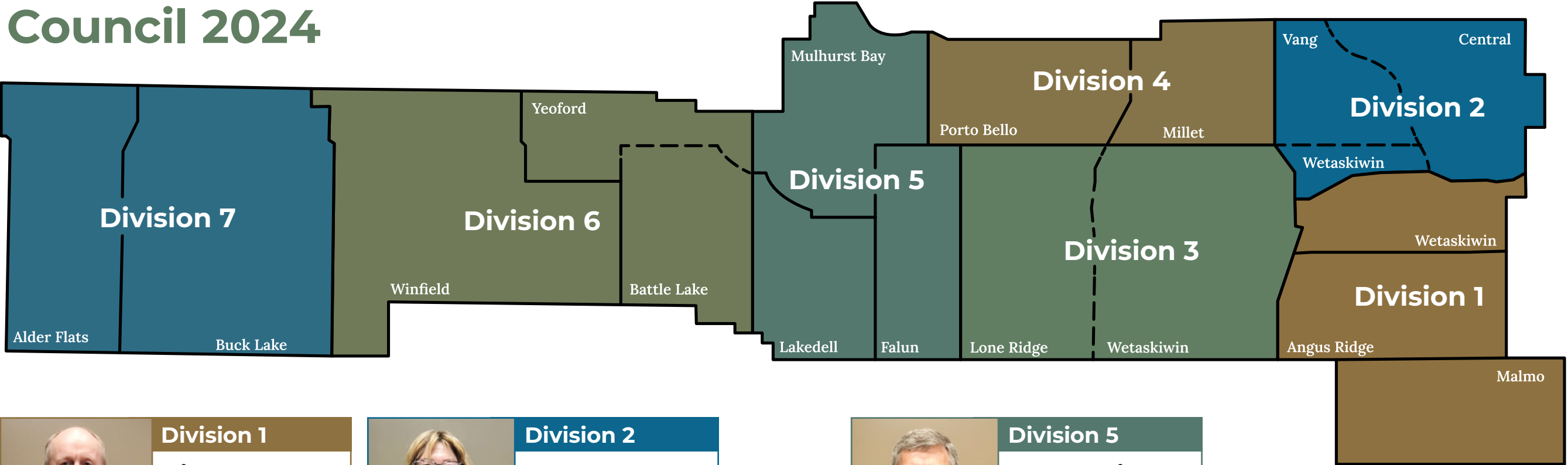
**OCTOBER 20<sup>TH</sup>**

For more information, visit **ELECTION 2025**  
[www.county.wetaskiwin.ab.ca](http://www.county.wetaskiwin.ab.ca)



# County of Wetaskiwin

## Council 2024





**Division 1**

**Bill Krahn**

bkrahn@county10.ca

780.312.4226 (C)



**Division 2**

**Lynn Carwell**

lcarwell@county10.ca

780.352.0589 (H)

780.312.0119 (C)




**Division 5**

**Ken Adair**

kadair@county10.ca

780.352.6318 (H)

780.361.6398 (C)



**Division 3**

**Dale Woitt**

dwoitt@county10.ca

780.352.7429 (H)

780.360.2737 (C)



**Division 4**

**Josh Bishop**

Reeve

jbishop@county10.ca

780.387.8483 (C)



**Division 6**

**Kathy Rooyakkers**

Deputy Reeve

krooyakkers@county10.ca

780.682.2353 (H)

780.514.9087 (C)



**Division 7**

**Lyle Seely**

lseely@county10.ca

780.388.3894 (H)

780.621.1044 (C)



# Joint News Release

## Thorsby & County of Wetaskiwin

### Exploring New Opportunities to Strengthen Water Security

For Immediate Release – The Town of Thorsby and the County of Wetaskiwin are excited to announce the exploration of a new collaborative effort aimed at enhancing water services and ensuring robust water security for our region. Thorsby’s sophisticated water system is at the heart of this initiative, which seeks to provide enhanced water options for County residents, businesses and the agricultural sector, both now and in the future.

Currently, Thorsby and the County of Wetaskiwin are assessing the feasibility of a collaborative water distribution model. This proactive effort aims to identify a more secure and sustainable water source in response to the County’s current dependence on wells. This initiative is designed to secure a reliable water supply that meets immediate needs and supports future growth throughout the greater region.

“Without a glacier fed waterbody within our municipality, water security is critical to the success of the County of Wetaskiwin,” stated Reeve Josh Bishop. “This opportunity could increase the efficiency of the water systems within both municipalities. We commend Thorsby for their forward-thinking approach and look forward to working together in building a strong and

profitable system that will achieve the scale necessary to become self sustaining.

“Thorsby’s future success has always been about marketing and distributing its water,” stated Mayor Hostyn. “I, along with our Council and administration have been diligently setting the groundwork to make this a reality. We are so pleased to be working closely with the County of Wetaskiwin exploring options that could benefit the residents, agriculture, and businesses in both municipalities for economic success.”

We invite all stakeholders—residents, businesses, and neighboring communities—to engage with us as we explore future development of critical water services. This collaboration represents a unique opportunity for everyone to contribute to ensuring our region has the water it needs to grow and prosper safely.

Our current focus includes optimizing water management strategies and maintaining water infrastructure to ensure safe, reliable water services for everyone, including residents, businesses, and industry. This initiative not only addresses the diverse water needs across our region but also promotes sustainable development and equitable resource access.



By working together, we can bring our overhead costs down, increase capacity and spur industrial and commercial growth. This strategic approach enhances the potential for new investments in emerging sectors, strengthening Alberta’s economy and supporting long-term sustainable development.

For more information or to get involved, please contact:

**Reeve Josh Bishop & CAO Scott MacDougall**  
County of Wetaskiwin: 780.352.3321

**Mayor Darryl Hostyn & CAO Donna Tona**  
Town of Thorsby: 780.789.3779

Let’s work together to  
secure a prosperous and  
water-secure future for  
our region.



# Home Support Services

## Helping You Stay at Home

The County of Wetaskiwin’s Home Support Program provides light housekeeping services to help eligible residents maintain their independence and remain in their homes. Services include vacuuming, dusting, mopping, laundry, and spring/fall cleaning.

Support is available for seniors, new parents (up to eight weeks postpartum), individuals recovering from surgery or medical treatment, and those living with disabilities. Referrals can come from family, friends, doctors—or individuals themselves. A fee based on income is charged per hour and invoiced monthly.

### Want to Make a Difference?

Are you interested in supporting others in your community? The County is always looking for caring, dependable individuals to join our team as Home Support Workers. It’s a rewarding way to give back and help residents live more comfortably at home. Contact the FCSS Community Development Coordinator at **780.352.3321** or email [fcssadmin@county10.ca](mailto:fcssadmin@county10.ca) to learn more.

For more information on Home Support Services, reach out to the FCSS Community Program Coordinator. Let us help you maintain your home—and your independence.

# Community Program & Events Guide

*Keeping our Community Connected*

To view the entire guide, visit [county.wetaskiwin.ab.ca/community-guide](https://county.wetaskiwin.ab.ca/community-guide)

Have an activity or club you would like us to share?

Email [fcssadmin@county10.ca](mailto:fcssadmin@county10.ca)



## Contact Us

**780.352.3321**  
[fcssadmin@county10.ca](mailto:fcssadmin@county10.ca)  
Box 6960, Wetaskiwin, AB, T9A 2G5  
243019A Highway 13



Groups & Non-Profits Included
Alder Flats-Buck Lake Public Library
Buck Lake Ag Society & Farmers Market
Buck Lake Stampede
Family Resource Network
JEDI Alberta
Lone Ridge Hall
Millet Art 'n Crafts Guild
Millet & District Museum & Archives
Millet Library
Mulhurst Bay Community League
Pigeon Lake Library
Royal Canadian Legion Mulhurst #246
Usona Ag Society
Wetaskiwin Ag Society
Wetaskiwin Community Collaborative Network
Wetaskiwin Medi Land Society
Wetaskiwin Olympian Swim Club
Winfield Community Library
Wizard Lake Watershed & Lake Stewardship Association
Yeoford Hall



# Learn Your Technology!

Learn the basics of your computer and it's apps in a friendly classroom environment at the **Mulhurst Bay Community Hall**.

Classes re-starting in the fall of 2025.  
Visit the website for future dates and topic information.

**Call or Email to register!**

780.352.3321  
fcssadmin@county10.ca



# Psychological First Aid (PFA)

*Earn your PFA Red Cross Certificate*

PFA is for everyone over the age of 16!

Gain an understanding of how to recognize when someone is experiencing distress. Learn how to offer help to promote resiliency and reduce the impact of loss and trauma, not only in a disaster, but everyday life.

**When:** Saturday, May 31<sup>st</sup> & Sunday, June 1<sup>st</sup> 2025

**Time:** 9 AM - 4 PM, Daily (2-day course)

**Where:** Lakedell Agricultural Society  
(461043 Range Road 12)

**Cost:** FREE

**Registration Deadline:** May 16, 2025

Limited Space Available



Register online at [county.wetaskiwin.ab.ca](https://county.wetaskiwin.ab.ca)  
or Scan the QR Code

# ADHD is my SUPERPOWER!

ADHD is more than busy, unfocused and disorganized!  
ADHD can be a Superpower!

What does ADHD look like? Have you or a teacher wondered if your child could be diagnosed with ADHD?

Did you know that a student with ADHD often receives up to 20,000 negative comments by the age of 10??  
Do you want to assist your child to experience success and use their ADHD as a Superpower?

**Lets help to erase the stigma of ADHD!**



**Where:** Online (emailed link)

**When:** May 27, 2025

**Time:** 7:00 PM

**Cost:** FREE

**Register:** Online at [county.wetaskiwin.ab.ca](https://county.wetaskiwin.ab.ca)

or email [fcssadmin@county10.ca](mailto:fcssadmin@county10.ca)

**Questions?** Call FCSS at 780-352-3321



**Presented by:**  
Jenn Parker  
B.A., M.A.

# Emergency Preparedness Session

Join us for an Emergency Preparedness Session and gain the knowledge to protect yourself, your loved ones, and your community during any emergency.  
**Don't wait**—take action now to ensure you're ready for whatever comes next.



**WHERE:** Buck Lake Seniors Centre

**WHEN:** May 22, 10:00 AM

**REGISTRATION:** Scan the QR Code

or email [fcssadmin@county10.ca](mailto:fcssadmin@county10.ca)

**COST:** Free



**Questions?**  
Contact FCSS  
780-352-3321





# Planning & Development

## Recreational Unit for Personal Use and Storage

Each zoning district has specific regulations regarding the number of recreational units allowed on a property. Please refer to your zoning district to determine the permitted number of units and guidelines for personal use and/or storage.

Additional information can be found under Section 9.17 Recreational Unit, Personal Use & Storage of the Land Use Bylaw.

Zoning	# of RU Allowed	Guidelines
Agricultural (AG)	3 under 40 acres 4 over 40 acres	Development Permit not required and can have a vacant lot
Conservation (C)	2	Development Permit not required and can have a vacant lot
Country Residential (CR)	2	There must be an existing dwelling on the property, or you must apply for a Development Permit for an approved dwelling.
Hamlet Residential (HR)	2	There must be an existing dwelling on the property, or you must apply for a Development Permit for an approved dwelling.
Residential Recreation (RR)	2	A Development Permit is not required if there is an existing dwelling on the property. If there are no existing or planned dwellings, a permit is required. Please refer to Section 9.17.1 of the Land Use Bylaw for application details.

To determine the zoning for your property, please follow these steps:

- 1. Visit the County website or scan the QR code to access the Interactive Map.
- 2. Sign in as a Guest.
- 3. Use the search function to locate your property on the map.
- 4. Once you find your property, click on it.
- 5. Look for the Zoning Code information linked to your property.

## Seasonal Docks

Written consent or approval from the County is not required for a private dock or mooring structure attached to a County Environmental or Municipal Reserve, as long as it complies with Policy 61.0.4 Seasonal Docks & Mooring Structures on County Managed Lands and Provincial Guidelines.

Community docks or mooring structures within County Disposition Areas do require annual authorization from the County. These must adhere to Policy 61.0.1 Seasonal Docks & Mooring Structures on Disposition Lands and Provincial Guidelines.

To view the policies, visit the Recreational Use section under Planning and Development on the County website, or scan the QR code provided.

## Land Use Bylaw 2024/66

The new Land Use Bylaw was officially approved on December 17, 2024. To view the Bylaw, visit the Planning and Development Page on the County Website or scan the QR Code.



## Walking Trails

If you'd like to create a walking trail on County Environmental or Municipal Reserves, you can apply for a permit. This permit allows you to mow a 2-meter-wide trail from your residence through the Reserve.

You can find the Direct Access Walking Trail Application on the County website under the Applications Page in Planning and Development. Please email completed applications to [wpermits@county10.ca](mailto:wpermits@county10.ca) for review. There is no fee for a trail application.

**Note:** Docks and other mooring structures cannot be stored on County Managed Lands, including Municipal Reserve, Environmental Reserve, and Road Allowances. Mowing a trail or storing personal items on County Reserves without a permit may lead to fines and enforcement under the Reserve Bylaw.

If communities are interested in developing individual **Community Management Plans** for the use and care of County-owned lands in their area, please contact Shawn Hipkiss, Director of Planning and Development, at **780.352.3321**.

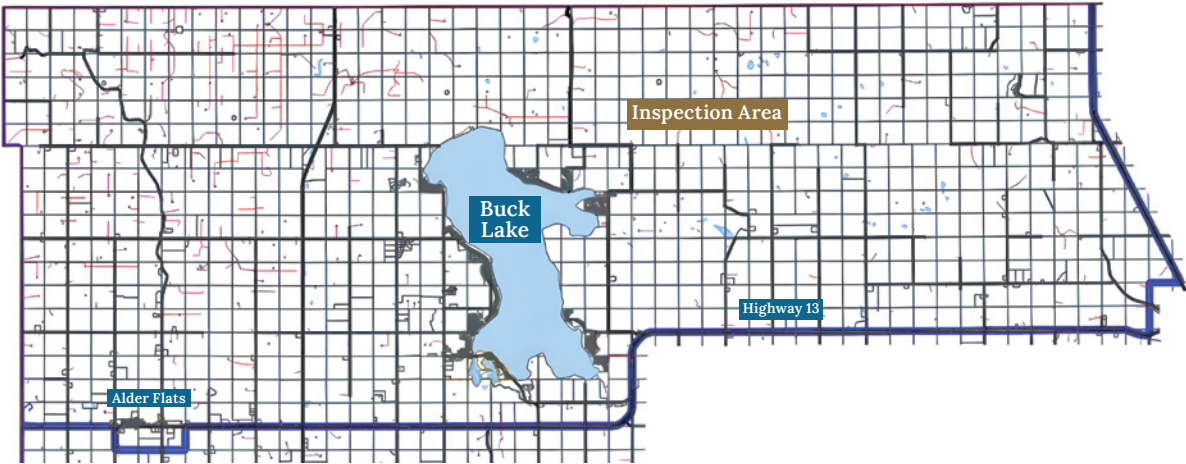




**Financial**



# Assessment Map



The County of Wetaskiwin re-inspects all properties on a five-year cycle based on best practice requirements as set out by Alberta Municipal Affairs Assessment Services Branch. Shown on the map are the respective areas for 2025 inspection. Additionally, a request for information has been mailed out to the 2025 re-inspection area in the winter of 2025 to expedite the inspection process. Annual inspections (reviewing new and progressive construction) are also being conducted throughout the County. The County requests your co-operation in assisting the assessors with any information necessary to complete the assessments or re-assessments in your area. County staff will always carry identification which may be asked for if there is any question. Should you have any questions please contact Rene Boutin, Director of Assessment at 780.361.6233.

## 3 Steps to Register for Utility E-Billing

- 1. Visit:**  
[www.county.wetaskiwin.ab.ca/e-billing](http://www.county.wetaskiwin.ab.ca/e-billing)
- 2. Fill out the online form**  
(have your utility account number ready)
- 3. Click submit!**  
Your next utility invoice will be sent to the email you provide and no longer mailed.

**Questions?**  
P: 780.352.3321 or E: [utility@county10.ca](mailto:utility@county10.ca)

**IMPORTANT**  
Customers who choose to receive a paper utility invoice instead of an electronic bill (e-bill) will be required to pay a fee of \$2.00 per utility invoice.

**Reasons to Switch to E-billing**

- Same look as paper bill, but more secure
- Easily download for other uses
- Better for the environment
- Safe, convenient, contact-less

# UAPP

Utility Auto Payment Plan

Bill Run Month(s)	Bill Mailed By	Auto Payment Date
January & February	End of February	<b>March 30<sup>th</sup></b>
March & April	End of April	<b>May 30<sup>th</sup></b>
May & June	End of June	<b>July 30<sup>th</sup></b>
July & August	End of August	<b>September 30<sup>th</sup></b>
September & October	End of October	<b>November 30<sup>th</sup></b>
November & December	End of December	<b>January 30<sup>th</sup></b>

UAPP is a plan that enables you to pay your bill from the County of Wetaskiwin for water, sewer, and waste collection through an electronic transfer from your bank account. Your account will be debited bi-monthly as per the schedule above. You will be charged the actual utility charges for 2 months.

**Utility Auto Payment (UAPP) Schedule**  
To register, please fill out the on-line form at: [www.county.wetaskiwin.ab.ca/uapp](http://www.county.wetaskiwin.ab.ca/uapp) or for more information, email [utility@county10.ca](mailto:utility@county10.ca) or phone 780.352.3321 ext. 2287.

## New! Utility Request Form

All utility service requests can now be submitted through the County of Wetaskiwin website using the new fillable Utility Request Form. This form should be completed for all service needs, including water or wastewater tie-ins, and service connections or disconnections. Once submitted, your request will be automatically directed to the appropriate department for processing.



# Public Notice

## Update Your Mailing Address

The County of Wetaskiwin would like to remind all residents and property owners that it is essential to keep your mailing address up to date with us. Our records are based on the addresses provided in land titles, and accurate information ensures that you receive timely and important communications regarding services, notices, and updates.

**How to Update Your Address:** If your mailing address has changed, or if you need to verify that your current address is correct, please update your information as soon as possible. To update your address, simply visit our website: [www.county.wetaskiwin.ab.ca/change-address](http://www.county.wetaskiwin.ab.ca/change-address)



# Council Salaries 2024

Division	Salary	Benefits/Allowances	Total
1	\$54,876.96	\$15,214.52	\$70,091.48
2	\$54,876.96	\$15,214.52	\$70,091.48
3	\$54,876.96	\$15,857.96	\$70,734.92
4	\$78,750.00	\$12,526.06	\$91,276.06
5	\$54,876.96	\$15,214.52	\$70,091.48
6	\$59,990.00	\$16,529.24	\$76,519.24
7	\$54,876.96	\$15,857.96	\$70,734.92
	\$413,124.80	\$106,414.78	\$519,539.58



## Discover the guidance you need for your business journey with JEDI

JEDI is a dynamic non-profit organization focused on supporting economic growth in the County of Wetaskiwin. We help local businesses and agriculture producers by providing useful tools and resources to succeed.

Visit our website or contact us by phone or email to learn about upcoming workshops, events, funding programs, and other helpful business information.

### Empowering Local Businesses Through our Business Visitation Program

We know how important local businesses are to our community’s economy, so this spring and summer, we’re continuing our Business Visitation Program. This program helps us learn more about what local businesses need and how they feel about doing business in the County of Wetaskiwin. If you’d like us to visit your business, please contact our office to set up a time.



## Exciting Events on the Horizon

Join us for our annual Ag Forum held each Fall, featuring expert speakers discussing pertinent agriculture topics tailored to our region’s farmers. Follow us on social media or sign up for email updates for event dates & details as they become available.

The Leduc, Nisku, Wetaskiwin Regional Chamber of Commerce (the Chamber) is hosting the State of the Wetaskiwin Region on May 1, 2025. The event will feature County of Wetaskiwin Reeve Josh Bishop and City of Wetaskiwin Mayor Tyler Gandam. To register or check out other Chamber events, visit [business.yourchamber.ca/](https://business.yourchamber.ca/).

## Discover Wetaskiwin County West (DWCW)

In partnership with the Chamber, the DWCW tourism initiative serves as a centralized resource for visitors to plan their journeys and for locals to discover nearby businesses, fostering community growth and celebrating the rich rural heritage in and around the Hamlets of Winfield, Buck Lake and Alder Flats. Start planning your adventure today at [discoverwetaskiwinwest.ca](https://discoverwetaskiwinwest.ca).





## Regional Tourism Group

JEDI, together with the Pigeon Lake Regional Chamber of Commerce and the Village Business Marketing Group, has started a regional tourism group. The group currently meets once a month on Thursday evenings at the Village Creek Country Inn. If you're a tourism operator in the County of Wetaskiwin and would like to get involved, please reach out to us at [info@jedialberta.com](mailto:info@jedialberta.com).

## The Chamber's Small Business Support Programming

JEDI is pleased to partner in the Chamber's small business support program. This program goes beyond the startup phase to provide necessary resources for small business. Whether you are an entrepreneur with an idea, a newcomer to the area, a home-based business, or looking to grow and thrive, this program meets you wherever you are.

The Yes-Up Program provides entrepreneur support and guidance for students ages 13-18. This program offers free resources to teachers and students with the goal of inspiring youth to pursue entrepreneurial dreams and giving them support to succeed.

For more information on the Chamber's Small Business Support Program visit [www.yourchamber.ca/smallbusinesssupportprogram/](http://www.yourchamber.ca/smallbusinesssupportprogram/) or contact Amber Cook, Small Business Specialist at [acook@yourchamber.ca](mailto:acook@yourchamber.ca) or 780.566.5454.

## Resources & Data Page

Explore our revamped Resources & Data page for a wealth of information on business resources, grants, training centers, research facilities, and more. Your go-to hub for everything business awaits at [jedialberta.com/resources-data/](http://jedialberta.com/resources-data/).

## Residential Solar Grant

Joint Economic Development Initiatives (JEDI), on behalf of the County of Wetaskiwin, is pleased to launch the 2025 Residential Solar Installation Grant Program to help residents lower electricity costs through sustainable energy.

Funded by a generous \$65,000 anonymous donation, the program offers grants of up to \$6,500 for homeowners installing new solar PV systems of at least 5kW.

Applications will be accepted from Earth Day, April 22, until May 8 at 4:30 p.m., by email or in person. All complete applications—including a quote for a new 5kW+ system—will be reviewed following the May 8 deadline. Grants will be awarded on a first-come, first-served basis to eligible applicants with complete submissions. Existing systems or expansions are

not eligible, and incomplete applications will not be considered.

Requirements include obtaining development and building permits and passing a final inspection by Superior Safety Codes. Approved projects must be completed within eight months.

For details on eligibility and to obtain the application form, visit [www.jedialberta.com](http://www.jedialberta.com) or attend the JEDI office located in the County of Wetaskiwin Administration Building.

The County is grateful for this generous donation. It not only offers support to residents managing rising utility costs, but also provides a positive and practical way to celebrate Earth Day through local action.

## Connect With Us

Visit [www.jedialberta.com](http://www.jedialberta.com), email us at [info@jedialberta.com](mailto:info@jedialberta.com), or call 780.361.6232.

Follow us on social media [@JEDIALberta](https://www.instagram.com/JEDIALberta) for the latest updates.



**JEDI is your partner  
for **business & investment** in the  
County of Wetaskiwin.  
Reach out & **discover**  
how we can support  
your **success** today!**

**WWW.JEDIALBERTA.COM**





# Recreational



# Recreation Enhancements —



## Exciting Recreation Enhancements Coming to the County of Wetaskiwin in 2025

Exciting news for outdoor enthusiasts in the County of Wetaskiwin! Whether you love hiking, camping, or simply enjoying nature with family and friends, 2025 promises to bring some great new opportunities to get outside and explore.

A brand-new hiking and walking trail system is being developed around the scenic Twin Lakes area, set to open on May 17, 2025. Designed to suit a range of abilities, these trails will offer residents and visitors a fantastic way to connect with nature, breathe in the fresh air, and stay active. And the adventure doesn't stop there—plans are already in place to expand the network in 2026, giving outdoor enthusiasts even more space to discover.

Campers will also notice improvements this year, as campground sites at Buck Lake, Twin Lakes, and Battle Lake are upgraded. Each site will be leveled or graded, with additional gravel added to improve stability and comfort.

Residents and visitors who enjoy spending time at the lakes will be pleased to hear that the County is also upgrading the beach areas at Twin Lakes and Viola Beach. These improvements aim to boost safety, reduce maintenance needs, and enhance the overall visual appeal of the spaces—encouraging more people to enjoy the water and surrounding amenities.



# Twin Lakes Trails

## County of Wetaskiwin

### Rules & Reminders

- Stay on Designated trails
- Dogs Allowed
- Cycling Allowed
- No Littering
- No ATVs/Snowmobiles
- No Alcohol
- No Horses
- No Fires
- No Hunting

Map details: The map shows two lakes, West Lake and East Lake, with several trail routes connecting them. Distances are marked along the trails. A legend indicates symbols for 'You Are Here', 'Twin Lakes Campground', 'Trail Head', 'Washrooms', and 'Parking'. A compass rose is also present.

Recreation facility improvements continue indoors as well. The Winfield Arena's public washrooms will receive a full renovation, including new toilets, faucets, and urinals, along with updated metal partitions and new flooring to meet modern standards. Additional washroom floor repairs are planned for Buck Lake, Mulhurst, and Battle Lake. Cracks will be repaired, floors leveled, and a professional-grade epoxy coating applied.

The County of Wetaskiwin is proud to invest in recreation that supports healthy lifestyles, encourages tourism, and enhances the everyday experience for residents. With a mix of new amenities and thoughtful upgrades, 2025 is shaping up to be a great year to get out and enjoy everything our beautiful region has to offer.





# Camping in Wetaskiwin

## Discover the Great Outdoors: Camping in the County of Wetaskiwin

The County of Wetaskiwin is home to lush landscapes, abundant wildlife, and serene lakes, making it an ideal spot for those looking to escape the hustle and bustle of city life. Whether you're interested in hiking, fishing, or just soaking in the natural beauty, the County's campgrounds provide the perfect base for all your outdoor activities.

### Booking Your Adventure

To enhance the camping experience, the County of Wetaskiwin offers a user-friendly online booking system through Let's Camp. This platform allows visitors to conveniently reserve spots at the County's municipal campgrounds, ensuring you have a place to call home as you explore the wilderness. The system is designed to provide up-to-date availability information and secure payment options, making it easy to plan your trip from the comfort of your home.

The County of Wetaskiwin is committed to sustainability and encourages campers to adhere to eco-friendly practices. Campers are urged to respect wildlife, carry out all trash, and keep the campgrounds clean. This

not only helps in maintaining the natural beauty but also ensures that future visitors can enjoy the same pristine conditions.

Pack your bags, prepare your gear, and get ready to explore the great outdoors in the heart of Alberta. Whether you are seeking solitude or a fun family outing, the County of Wetaskiwin is ready to welcome you to its open arms and endless skies.

For detailed information about the specific campgrounds and services offered, see the County Campgrounds and services on the next page.



County of Wetaskiwin No. 10

2025 CAMPING COUPON

One (1) Night of Camping FREE (No Cash Value)

Redeemable for County of Wetaskiwin Residents at Municipal Parks including:

Battle Lake Park

Buck Lake Park

Coal Lake South Park

Mound Red Park

Red Deer Lake Park

Twin Lakes Park

BOOKINGS MADE ONLINE AT [LETSCAMP.CA](https://lets-camp.ca)

CALL THE OFFICE AT 780-352-3321

FOR PROMO CODE







# Campgrounds

Online reservations available through [lets-camp.ca](https://lets-camp.ca)



**Battle Lake**  
20077A TWP RD 462A  
[battlelake@county10.ca](mailto:battlelake@county10.ca)

- \$29/night
- Boating & Fishing
- No Hook Ups
- Pay Showers
- Restrooms
- Wood (\$10.00 per bag)



**Buck Lake**  
710 Lakeshore Drive East  
[bucklake@county10.ca](mailto:bucklake@county10.ca)

- \$29/night
- Fishing
- No Hook Ups
- Trailer Dumping
- Pay Showers
- Restrooms
- Wood (\$10.00 per bag)



**Coal Lake South**  
764070 HWY 822  
[coallake@county10.ca](mailto:coallake@county10.ca)

- \$27/night
- Boat Launch
- Fishing
- No Hook Ups
- Restrooms
- Wood (\$10.00 per bag)

Please visit [www.county.wetaskiwin.ab.ca](https://www.county.wetaskiwin.ab.ca) for more Parks and Recreation information.



**Mound Red**  
281077B TWP RD 452  
[moundred@county10.ca](mailto:moundred@county10.ca)

- \$27/night
- Trout Fishing
- No Hook Ups
- Group Camping
- No Motor Boats
- Wood (\$10.00 per bag)



**Red Deer Lake**  
440050 RGE RD 222A  
[reddeer@county10.ca](mailto:reddeer@county10.ca)

- \$24/night
- Boat Launch
- No Hook Ups
- Trailer Dumping
- Wood (\$10.00 per bag)



**Twin Lakes**  
461034B RGE RD 33A  
[twinlakes@county10.ca](mailto:twinlakes@county10.ca)

- \$27/night
- Fishing
- No Hook Ups
- No Motor Boats
- Playground
- Wood (\$10.00 per bag)





## Services



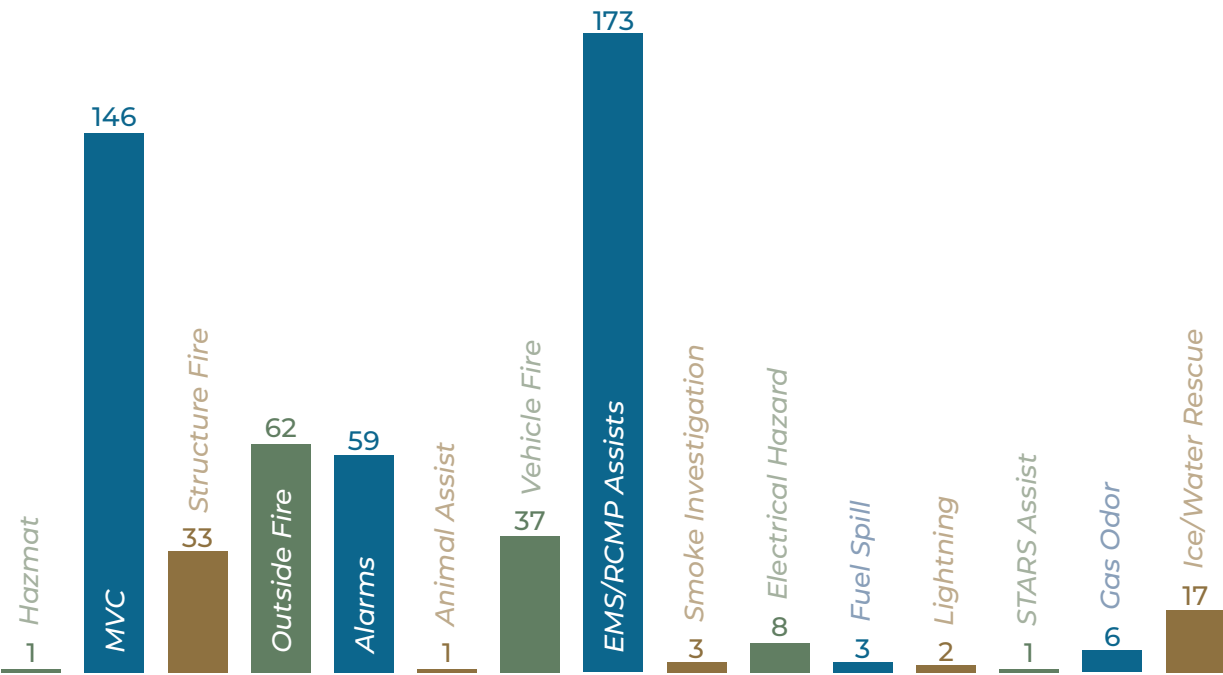
# Fire Services

## Fire Permits are REQUIRED from March 1st to October 31st

An application for a Fire Permit should be made two or three days prior to the first day of burning. A Permit will be issued for a maximum ten-day period beginning from the date of issue; however certain conditions may be required in order for a permit to be issued. If an extended period is required for burning, application must be made for another Fire Permit after the first Permit is terminated.

### Your Responsibility as a Holder of a Fire Permit

1. A Fire Permit gives authority to the permittee to set a fire according to the regulations and the terms and conditions on the Permit. Conditions stated on your fire permit must be strictly adhered to. You may be liable for fire suppression costs or penalties as provided by law for any damage that may occur while burning without a permit, or for failing to comply with the conditions as stated on your fire permit.
2. A Fire Permit DOES NOT relieve the holder from the responsibility of keeping that fire under control and extinguishing, if necessary



2024 County of Wetaskiwin Fire Department Call Out Stats

Winfield, East/West Millet, Buck Lake/Alder Flats, South Pigeon Lake, Mulhurst, Wetaskiwin Rural

## Permission to Burn Stubble

Under the Soil Conservation Act the County of Wetaskiwin has the authority to issue Stubble Burning Permits. These permits are issued on an individual basis and a site inspection must be performed.

Contact the Director of Agricultural Services, Stephen Majek at **780.361.6226** to obtain a Stubble Burning Permit.



### Check out the Online Fire Permit System

[www.county.wetaskiwin.ab.ca/online-fire-permit](http://www.county.wetaskiwin.ab.ca/online-fire-permit)

Division 1	
Angus Ridge – Haultain New Sweden – Gwynne	
Nadine Taylor	647.202.5292
Janet Dyberg	780.312.5042

Division 2	
Coal Lake	
Ray Boeve	780.387.6375
Lori Criland	780.387.6367

Division 3	
Bearhills Lake – Lone Ridge – Usona	
Chad Irwin	780.312.3192
Ken Cherniak	780.352.4066

Division 4	
Hillside – Porto Bello – Pipestone	
Herb Waters	780.940.2903
Fay Waters	780.721.3075

Division 5	
Falun – Westeros – Mulhurst	
Wayne Gist	780.361.8624
Herb Waters	780.940.2903
Fay Waters	780.721.3075

Division 6	
Battle Lake – Winfield – Yeoford	
Christine Woods	780.682.2165
Albert Brandl	780.696.2547

Alberta Agriculture & Forestry	
(for permits in the Forest Protection Area)	
1-403.845.8250 <a href="http://www.alberta.ca/get-a-fire-permit">www.alberta.ca/get-a-fire-permit</a>	

Division 7	
Buck Lake – Alder Flats	
Gil Lechelt	780.388.2384
Mary Arseneau	403.612.5591
Amy Rainer	780.898.4803



# News Release

## County of Wetaskiwin Updates Fire Services Billing to Align with Provincial Standards

For Immediate Release – Effective June 1, 2025, the County of Wetaskiwin will be updating its fire services billing to align with Alberta Transportation fire billing rates. These changes aim to improve cost recovery for fire response and support critical investments in fire protection services across the County.

The update reflects a growing need to ensure that fire service rates keep pace with inflation and help address cost escalations and future capital purchases. Aligning billing with provincial standards will help the County sustain and strengthen fire protection services for all residents.

“On average, a fully equipped pumper truck now costs over \$1 million, and the County maintains 32 pieces of firefighting equipment across six fire departments,” said Mike Zajac, Director of Emergency Services. “These changes will support the replacement and maintenance of this vital equipment so we can continue providing reliable emergency response.”

Residents are encouraged to check with their insurance provider to ensure their policy includes coverage for firefighting costs, as this type of coverage can often be added if it’s not already included. There could be circumstances where coverage for firefighting expenses may be limited or possibly even excluded. For example, certain insurance companies may not cover the firefighting costs resulting from a fire to an outbuilding or piece of equipment which is not scheduled on your insurance policy. Forest and Prairie fires resulting from a fire event on your property may be excluded as well.

“It’s important to reach out to your insurance provider to confirm what’s included in your coverage,” said Reeve Josh Bishop. “Being informed now can help avoid unexpected out-of-pocket expenses in the event of a fire.”

For more information on these changes, or to view the updated bylaw, please visit: [www.county.wetaskiwin.ab.ca](http://www.county.wetaskiwin.ab.ca)

## EMERGENCY PREPAREDNESS WEEK

May 4-10, 2025

Follow Facebook for EP Week preparedness tips all week long!

Sign up for the Virtual Information Session on May 5, 2025. It will include the practical steps we can take to better prepare for emergencies.

<https://events.teams.microsoft.com/event/f06e5112-6906-4218-a7fd-6ab904e39342@2bb51c06-af9b-42c5-8bf5-3c3b7b10850b>

# Protective Services

## Community Peace Officers and Road Infrastructure

The County of Wetaskiwin builds and maintains paved and unpaved roadways for the use of the residents, industry, and visitors of the County of Wetaskiwin. Community Peace Officers (CPOs) assist the enforcement of Road Bans by regularly inspecting commercial vehicles that are travelling on these roads to make sure they are complying with regulations.

### Road Bans

Road Bans are weight restrictions that reduce the maximum weight allowed on roadways. There are three (3) types of Road Bans:

1. Seasonal Road Bans
2. Temporary Road Bans
3. Permanent Road Ban.

### What is the difference?

**Seasonal Road Bans** are applied as required to protect road infrastructure. These Bans are added or lifted depending on weather conditions typically in the spring to early summer months.

**Temporary Road Bans** are put in place throughout the year on an as-needed basis, depending on road conditions on certain roads or sections of roads.

**Permanent Road Bans** are typically placed on specific paved roads that are not designed to withstand heavy traffic (such as within hamlets and internal subdivision roads).

To review the current list of Road Bans in the County, please visit: [www.county.wetaskiwin.ab.ca/305/Road-BansHaul-Restrictions](http://www.county.wetaskiwin.ab.ca/305/Road-BansHaul-Restrictions).

### Why should I care about protecting road infrastructure?

It is estimated that a 1 mile (1.6 kilometer) segment of road build/rebuild can cost upwards to \$1,000,000, which is why the protection of these roads is important to all of us in the prudent and effective use of taxpayer dollars.

### Protective Services 2025 Strategic Plan Highlights

Pursuant to the Council’s Strategic Plan, CPOs support safe and progressive communities with the provision of first response services and risk management strategies. A 24/7-hour call centre is used to receive complaints and concerns from the public. CPOs collaborate with other Enforcement agencies such as RCMP, Fish and Wildlife/Alberta Sheriffs, CPKC Police, Wetaskiwin City Peace Officers as resources allow.





# Public Works



## Dust Control

The County of Wetaskiwin is now accepting applications for the 2025 Dust Control Program. Residents have the option to have dust control applied by the County or hire an approved independent third-party contractor to perform the work.

Any residents or companies seeking private dust control treatment to local roadways must use a qualified independent third-party contractor to perform the work. The Director of Public Works shall pre-qualify contractors seeking to conduct business as well as approve the type of dust abatement products to be applied. These include chloride-based compounds (salts), polymers, plant-based lignosulfonates, water, and various blended combinations. Unacceptable dust control products include petroleum-based materials such as crude oil, asphalt emulsions, used motor oil, and asphalt oil.

Any resident wishing to have the County apply their dust control must ensure their application is complete and payment made before the service can be provided. Applications after June 1st may



not be considered. County dust control services shall only be offered during the period of **June 1 to August 31** of each calendar year and is not guaranteed within a specific time frame. Cost **before** June 1st is **\$6.50 per lineal metre** (plus GST), **after** June 1st it is **\$7.50 per lineal metre** (plus GST) and entitles to only one (1) application. Re-treatments of dust control area may be requested; however, re-treatments shall be charged at **\$3.50 per lineal metre at 50% dilution**. Application forms and flags are available at the County of Wetaskiwin Administration office, Falun Co-op, Buck Lake Hardware and Seely's General (Alder Flats). The application form can also be found on the County website. [www.county.wetaskiwin.ab.ca/dust-control](http://www.county.wetaskiwin.ab.ca/dust-control).

For more information, please contact Public Works at **780.361.6241** or email, [pwadmin@county10.ca](mailto:pwadmin@county10.ca). Application of dust control product will not commence until Seasonal Road Bans have been lifted.

**Deadline for Application:**  
**June 1, 2025**



## New! Enhanced Grading Program

### Introducing the Enhanced Grading Program: Smarter Road Maintenance, Better Value for Residents

The County of Wetaskiwin is excited to roll out a new Enhanced Grading Program to improve local road conditions in a cost-effective, efficient manner. At the heart of this program is shoulder pulling—a process that restores road structure and drivability by reshaping the crown, reclaiming material from road edges and ditches, re-compacting the surface, and improving drainage.

Shoulder pulling is a high-value alternative to full road rebuilds, offering a practical solution for roads that need significant attention but don't require full reconstruction. It allows us to maximize taxpayer dollars while significantly extending the life of our rural road network.

Through recent assessments, nearly 100 miles of County roadways have been identified as candidates for shoulder pulling and localized improvements. The goal is to address 15 to 20 miles per year under the operational budget, ensuring steady progress and continuous road improvements for residents.

In 2024, the County piloted this approach with great success, reducing the average cost per mile from \$60,000 to \$37,000—a savings of 40–50%. This efficiency means we can fix more roads each year at a lower cost to residents.

The Enhanced Grading Program also enables the County to reassess and remove select grading projects from the Capital Plan, allowing more kilometers of roads to be addressed under this flexible, operational approach.

This is a smarter, more sustainable way to maintain our road network—and a strong investment in the future of rural infrastructure.



# County Drainage

## Improving Drainage Across the County: A Proactive Investment in Infrastructure

In 2024, the County of Wetaskiwin launched a Drainage Improvement Initiative aimed at addressing key drainage concerns across the municipality. By leveraging multiple contractors, the County was able to undertake several high-priority projects that focused on improving stormwater management and protecting infrastructure.

Projects were selected based on a variety of factors, including the severity of the drainage issue, the scope of work required, budget availability, and the existing workload of Public Works crews. Work included major excavation, deep-fill culvert replacements, regrading of ditches, erosion protection, and armoring of culvert inlets and outlets.

Contractors completed the work within the Public Works Operational Budget, offering strong value for ratepayers by enhancing drainage capacity in various areas of Divisions 6 and 7. These improvements will help reduce the risk of future flooding on both private property and within County rights-of-way, while safeguarding our road network and related infrastructure.

Looking ahead, Public Works intends to continue the Drainage Improvement Initiative in other areas of the County. As many culverts and ditch systems near the end of their service life, this approach provides a cost-effective and proactive solution for small-to medium-sized drainage challenges.

By investing in our bridges, culverts, and ditch networks today, we are building a stronger, more sustainable infrastructure system for tomorrow.



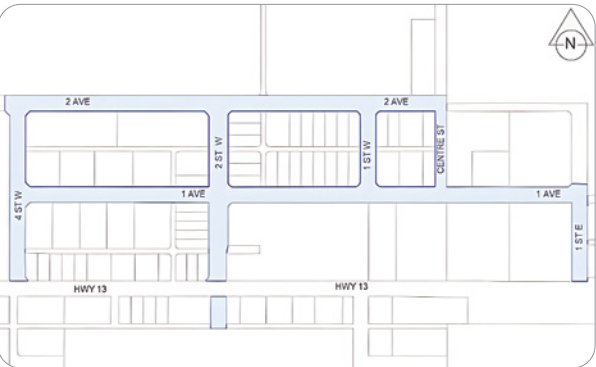
# Road Capital Projects

All new road construction projects will be posted on the County website [www.county.wetaskiwin.ab.ca](http://www.county.wetaskiwin.ab.ca) under Road Construction Projects as they are approved by Council. Updates will be posted periodically. To stay informed, go to the following link to sign up and receive notification when projects are added and updates are posted:

<https://www.county.wetaskiwin.ab.ca/notify>  
Stay Informed-Newsflash-County Projects

## Paved Road Projects

The work in Alder Flats is considered Phase II, base and paving. In 2024, work in Alder Flats included grading and building the road subgrade, drainage and culvert installations, concrete sidewalk removal and restoration, signage, fencing and landscaping.



The Public Works Department mails notices to landowners who will be directly affected by construction projects. Inquiries can be made by calling the Public Works Call Centre at 780.361.6241 or email [pwadmin@county10.ca](mailto:pwadmin@county10.ca)

The work on Range Road 12 (Lakedell Road) involves clearing, drainage and culvert installations, road subgrade construction, asphalt concrete pavement surfacing, line painting, signage, fencing and landscaping.







# Expanding Road Infrastructure Initiatives with 2025 Capital Road Upgrades

Following the introduction of the Enhanced Grading Program detailed earlier in our newsletter, the County of Wetaskiwin is excited to announce further strategic enhancements to our road infrastructure for 2025. Building on the cost-effective methodologies and success of the grading program, Council has approved additional focused efforts on gravel road upgrades as part of the Capital Budget for 2025.

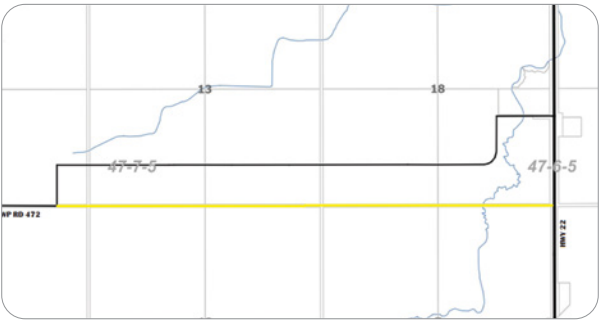
The upcoming year’s budget plans for approximately 20 kilometers of road improvements using Level 1 and Level 2 treatments, which align with the goals of the Enhanced Grading Program. These planned upgrades include comprehensive measures such as brushing, shoulder pulls, adjustments to horizontal and vertical grade lines, road cross-section corrections, subgrade stabilization, and culvert repair or replacement. This approach not only improves drivability but also enhances safety and extends the lifespan of our roads.

The specific segment targeted for these capital upgrades is RR 10, scheduled for a Level 2 shoulder pull covering 9.6 kilometers. Additional roads are also set to be identified for similar upgrades, ensuring a broad and effective implementation of the shoulder pull technique across the County’s road network.

These initiatives, namely the Capital Road Upgrades and the Enhanced Grading Program, highlight the County of Wetaskiwin’s commitment to a smarter, more sustainable approach to rural road maintenance. Together, they ensure a robust infrastructure network that enhances safety and usability for all residents.

# Township Road 472 Grading Project

This project involves building a new road in a government road allowance so that residents have a public road for access. The alignment will extend along the TR 472 right of way west for 3.5km to where it connects to the east termination of TR472.



# County or Provincial Road?

**Road maintenance in the County of Wetaskiwin is a cooperative effort at both the local and provincial level.**

County local roads include Township and Range Roads and associated bridges along with roads in hamlets and subdivisions. For any issues or concerns regarding road maintenance of County roads, contact the Public Works Call Centre **780.361.6241**. After hours, contact **780.352.0005**.

All provincial numbered highways (ie: Highways 2, 2A, 13, 20, 761, 814, etc.) are under the jurisdiction of the Province of Alberta (Alberta Transportation). Private contractors are hired by the province to operate and maintain all numbered primary and secondary highways. Mainroad Alberta Contracting is the provincial contractor for highways within the County. Mainroad Alberta: **1.877.875.2363**



# Utilities

## Agricultural Plastics

The County of Wetaskiwin transfer stations no longer accept agriculture chemical jugs. These items are to be returned to the vendor or store in which they are purchased. Clean Farms offers free pickup of ag plastics for high-volume producers in Alberta. To qualify, participants need to accumulate a half semi-truckload of specific materials like pesticide jugs, SPI bags, drums, grain bags or twine. Contact Clean Farms for more information, to schedule a pickup or visit [cleanfarms.ca](https://cleanfarms.ca).

## Recycling Update

The Alberta Recycling Management Authority (ARMA) is implementing an Extended Producer Responsibility (EPR) program for Hazardous and Special Products (HSP), including batteries, with a phased approach, starting with Phase I operational on April 1, 2025. The County of Wetaskiwin is working with Call2Recycle and Circular Materials to ensure all recycling programs are being met.

## Capital Project Updates

### Winfield Lagoon

The County is preparing to upgrade the Winfield wastewater lagoon to improve capacity and efficiency. The work includes cleaning out the lagoon, installing a new liner and drainage system, and upgrading valves and piping.

A project kickoff meeting was held on March 6, and all materials are ready. Construction is set to begin in July, weather permitting.

- Contractor: Alpha Construction
- Work schedule: 24 days on, 4 days off, 7:00 a.m. – 7:00 p.m.
- Project completion is targeted for October 30, 2025, weather permitting.

Watch the County website for future updates as the project moves forward.

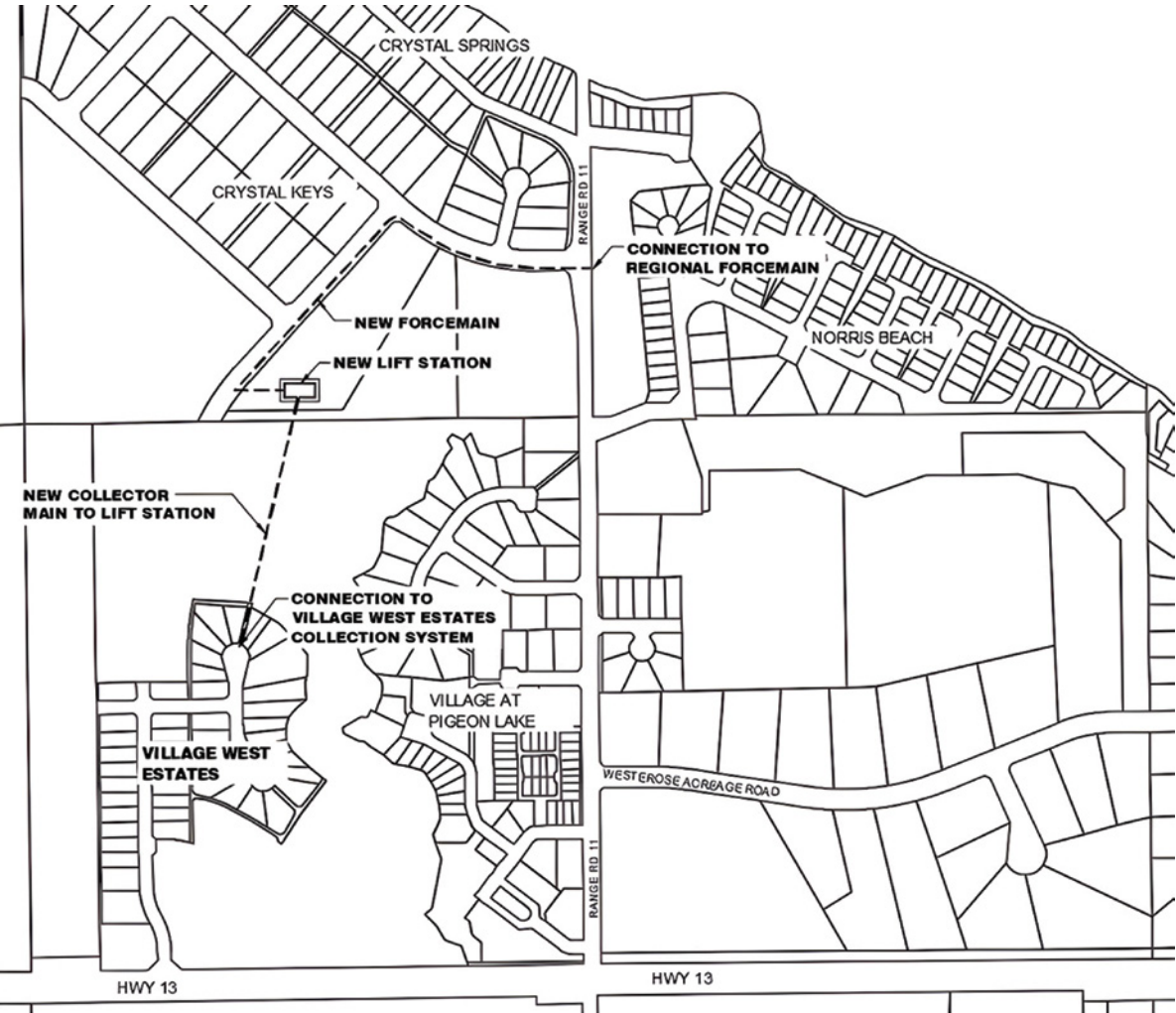


## Capital Project Updates

### Village West Construction

Work is progressing on the new wastewater system for Village West Estates, which will connect homes to municipal service through a new lift station and force main.

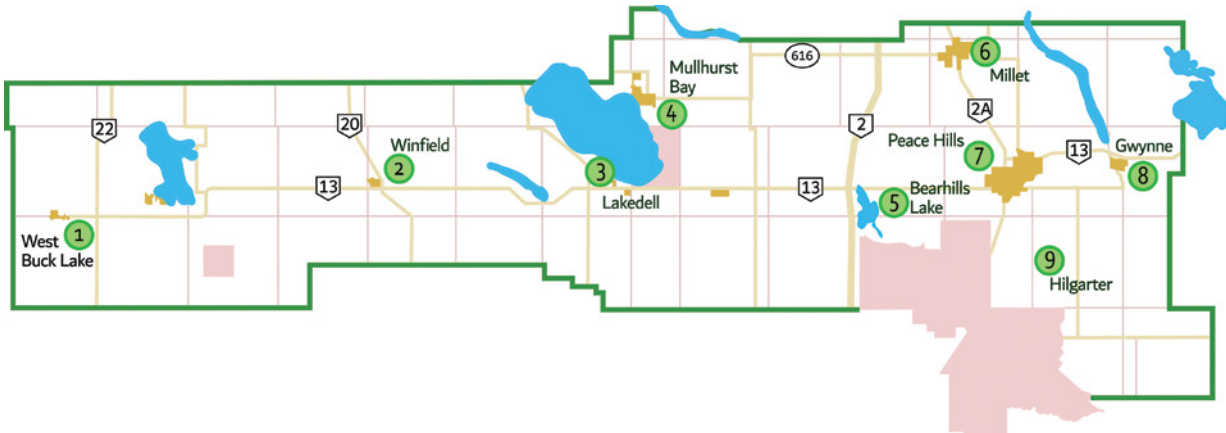
- Underground utility work began on February 10 and is now complete, including the gravity main and forcemain tie-in at Range Road 11.
- The lift station construction, led by Timcon, is expected to start in late April or early May, once weather conditions improve and land transfer is finalized.
- The County has approval to clear remaining trees, and power upgrades are planned to support the lift station.
- Work hours are 11 days on, 3 days off, from 8:00 a.m. to 5:00 p.m.
- Project completion is targeted for October 15, 2025, weather permitting.





# Transfer Stations

Station	Monday	Tuesday	Wednesday	Thursday	Friday	Saturday	Sunday
Bearhills	Closed	9:00am-5:00pm	Closed	Closed	Closed	9:00am-5:00pm	Closed
Buck Lake	Closed	9:00am-5:00pm	Closed	Closed	Closed	9:00am-5:00pm	Closed
Hilgartner	Closed	10:00am-4:00pm	Closed	Closed	Closed	10:00am-4:00pm	Closed
Gwynne	Closed	9:00am-5:00pm	Closed	Closed	Closed	9:00am-5:00pm	Closed
Lakedell	9:00am-5:00pm	Closed	9:00am-5:00pm	Closed	Closed	9:00am-5:00pm	Closed
Millet	Closed	9:00am-5:00pm	Closed	12:00pm-8:00pm	Closed	9:00am-5:00pm	Closed
Mulhurst Bay	Closed	9:00am-5:00pm	Closed	May 1-Oct 31: Noon-8:00pm Nov 1-April 30: Closed	Closed	9:00am-5:00pm	Closed
Peace Hills	Closed	Closed	April 1-Sept 30: Noon-8:00pm Oct 1-Mar 31: 9:00am-5:00pm	Closed	Closed	9:00am-5:00pm	Closed
Winfield	Closed	9:00am-5:00pm	Closed	Closed	Closed	9:00am-5:00pm	Closed



## Accepted at All Transfer Stations



**Household Garbage**  
(bagged and tied)



**Mattress & Box Springs**



**Ash**  
(boxed or bagged & tied)



**Demolition/ Renovation**  
(household)



**Auto Fluid Containers**  
(empty engine oil, brake fluid, etc.)



**Furniture**  
(chairs, dressers, etc.)



**Paint**  
(must be in original container with label)



**Wood**  
(treated wood, cut in length to fit in bin)



**Compost, Grass, Weeds**  
(must be bagged and put in bins, not allowed in burn pits)



**E-Waste & Household Electronics**  
(computers, TV, small appliances, electronic tools, etc.)

## Accepted at Select Transfer Stations



**Appliances**

Buck Lake, Gwynne, Lakedell & Mulhurst



**Fluorescent Light Bulbs**

Buck Lake, Gwynne, Lakedell, Millet & Mulhurst



**Oil, Oil Filters, DEF Containers**

(lids must be removed from containers)  
Peace Hills



**Propane Cylinders**

Buck Lake, Gwynne, Lakedell & Mulhurst



**Scrap Metal**

(BBQ, bikes, lawn mowers)  
Buck Lake, Gwynne, Lakedell & Mulhurst



**Agricultural Plastics**  
(twine, silage cover, grain bags)

Buck Lake, Gwynne, Lakedell & Mulhurst



**Wood**

(untreated, clean, burnable)

Buck Lake, Gwynne, Lakedell, Mulhurst & Winfield



**Tires**

(rims removed)

Buck Lake, Gwynne, Lakedell, Mulhurst & Winfield



**Wire**

(must be hand spooled)

Buck Lake, Gwynne, Lakedell & Mulhurst

## Items NOT Accepted at Transfer Stations

Ammunition, Animal Carcasses, Hides and Animal Parts, Automobiles, Automobile Batteries, Hazardous & Bio-hazardous Waste, Campers, RVS, Boats, Concrete, Concrete Blocks and Rocks, Dynamite, Liquid Waste Including Pesticides, Antifreeze, Camping Fuel or Other Flammable Liquids, Sewage, Poisons, Toxic Liquid, Power Poles, Railway Ties, Soil, Sod, Seeds or Grain, Toxic Weeds, Wood Treated with Creosote, Tree Stumps and Roots.





## Other Information

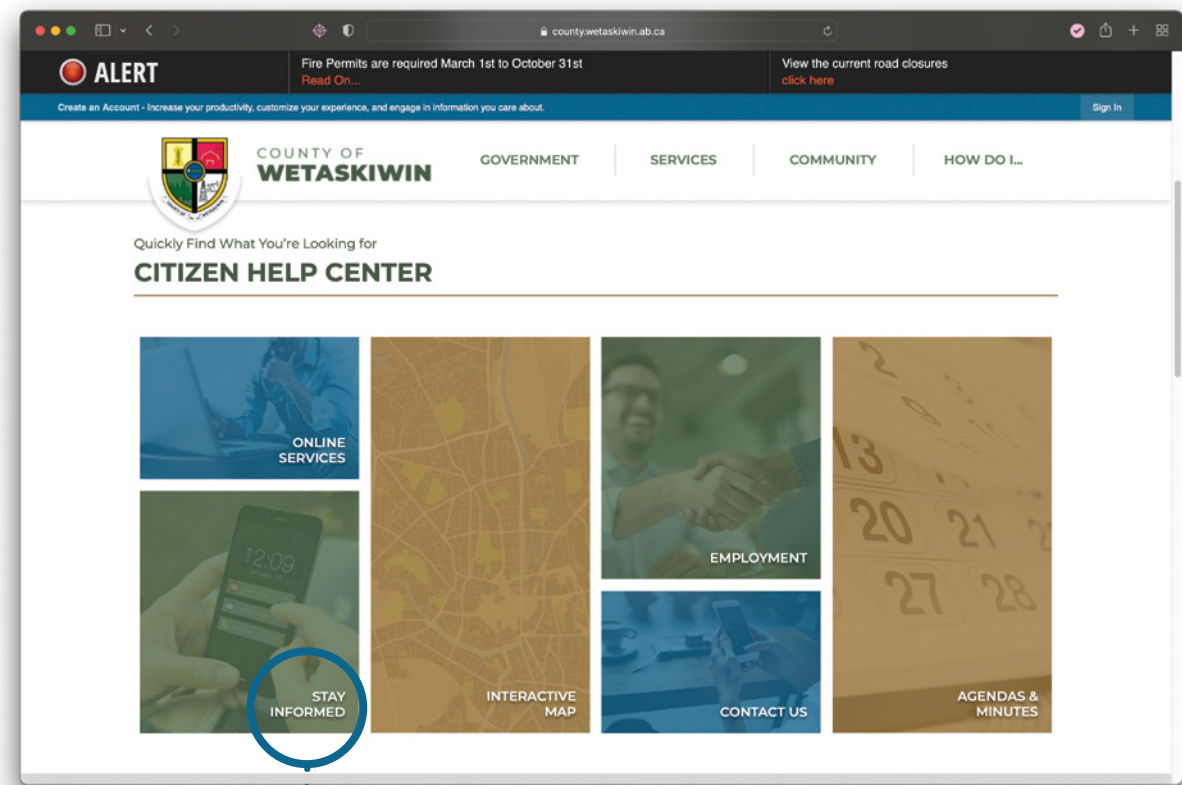


# Notify Me

In an effort to increase communication, the County has refreshed our Notify Me categories on our website.  
[www.county.wetaskiwin.ab.ca/notify](http://www.county.wetaskiwin.ab.ca/notify)

## Sign-Up to Stay Informed

Stay informed about Council meetings, public hearings, community events, construction projects, and more. Through the Notify Me service, residents can sign up to receive a variety of notifications directly via email or text message.



... Click here to sign-up for notifications

## Sign-Up Online

1. Enter your email address and click sign in.
2. If you would like to receive notifications by text message instead of email click the box below and enter your phone number and select save.

If you need help signing up call  
**780-361-6220** or email  
**nfinseth@county10.ca**

1

**Notify Me®**

Available Lists

1. Type your email address in the box and select **Sign In**.  
2. If you want to receive text messages enter your phone number and select **Save**.  
3. To subscribe or unsubscribe click and/or next to the lists to which you wish to subscribe/unsubscribe.

Please sign in to subscribe, unsubscribe, or manage your subscriptions

Email Address

2

**Your Profile Information**

**Email Address**

john.smith123@gmail.com

☒ I prefer to receive HTML emails when available

**Phone Number**

780-123-4567

Ex: 555-555-0123. Standard text messaging rates apply.

Save

Unsubscribe from All Lists

## Click Icon to Subscribe

To subscribe select the icon next to the name of the category you would like to subscribe to.

1. Select the **envelope** to subscribe for **emails** OR select the **phone** to subscribe to **text messages**.
2. Once you subscribe to the topics you want to see notifications about, you will receive an email confirming your subscription.

*\*You can unsubscribe or add subscriptions at any time.*

**Alert Center**

METHOD	LIST NAME
	Emergency Alert
	Fire Bans
	Road Bans/Haul Restrictions
	Road Closures

Click icon to subscribe

... Click to subscribe to Text Messages

... Click to subscribe to emails



# Staff Directory

## Main Office/General Inquiries

780.352.3321 or 1.800.661.4125

## Public Works Call Centre

780.361.6241

## Complaint & After Hours Dispatch

780.352.0005 or 1.800.665.0338

## Newsletter Design

Anna Kraemer | [annakraemer.ca](mailto:annakraemer.ca)



**Scott MacDougall**  
Chief Administrative  
Officer (CAO)  
[smacdougall@county10.ca](mailto:smacdougall@county10.ca)  
780.361.6225



**Jeff Chipley**  
Assistant CAO  
[jchipley@county10.ca](mailto:jchipley@county10.ca)  
780.361.6223



**Stephen Majek**  
Director of Agricultural  
Services  
[smajek@county10.ca](mailto:smajek@county10.ca)  
780.361.6226



**René Boutin**  
Director of Assessment  
Services  
[rboutin@county10.ca](mailto:rboutin@county10.ca)  
780.361.6233



**Naomi Finseth**  
Manager of Communications  
and Strategic Initiatives  
[nfinseth@county10.ca](mailto:nfinseth@county10.ca)  
780.361.6220



**Mike Zajac**  
Director of Emergency  
Services  
[mzajac@county10.ca](mailto:mzajac@county10.ca)  
780.361.6240



**Eric Hofbauer**  
Director of Finance  
[ehofbauer@county10.ca](mailto:ehofbauer@county10.ca)  
780.361.6228



**Shawna Frederickson**  
Manager of  
Information Services  
[sfrederickson@county10.ca](mailto:sfrederickson@county10.ca)  
780.361.6229



**Geoff Lynch**  
Director of Leisure &  
Community Services  
[glynch@county10.ca](mailto:glynch@county10.ca)  
780.361.6227



**Richard Horncastle**  
Director of Economic  
Development  
[rhorncastle@jedialberta.com](mailto:rhorncastle@jedialberta.com)  
780.361.6231



**Shawn Hipkiss**  
Director of Planning  
& Development  
[shipkiss@county10.ca](mailto:shipkiss@county10.ca)  
780.361.6235



**Dallas Vikse**  
Public Works Manager  
of Operations  
[dvikse@county10.ca](mailto:dvikse@county10.ca)  
780.361.6241



**Christopher Kilosky**  
Utilities Manager  
[ckilosky@county10.ca](mailto:ckilosky@county10.ca)  
780.361.6241





## County of Wetaskiwin No. 10

Mailing: Box 6960

Wetaskiwin, AB, T9A 2G5

243019A Hwy 13

Phone: 780.352.3321 Fax: 780.352.3486

[www.county.wetaskiwin.ab.ca](http://www.county.wetaskiwin.ab.ca)

[facebook.com/wetaskiwincounty](https://facebook.com/wetaskiwincounty)

Find us on LinkedIn @ County of Wetaskiwin